



Fisheries and Oceans  
Canada

Pêches et Océans  
Canada

Canadian  
Coast Guard

Garde côtière  
canadienne

# Notices to Mariners

**Edition No. 05/2025**  
**May 30, 2025**



Safety First, Service Always

## Monthly Eastern Edition

Canada 

Notices to Mariners – Monthly Eastern Edition  
Edition No. 05/2025

Aussi disponible en français :  
Avis aux navigateurs – Édition mensuelle de l'Est  
Édition n° 05/2025

**Published under the Authority of:**

Canadian Coast Guard Programs  
Aids to Navigation and Waterways  
Fisheries and Oceans Canada  
Montreal, QC H2Y 2E7

For more information, contact [DFO.Notmar-Notmar.MPO@dfo-mpo.gc.ca](mailto:DFO.Notmar-Notmar.MPO@dfo-mpo.gc.ca).

© His Majesty the King in Right of Canada,  
as represented by the Minister of Fisheries, Oceans  
and the Canadian Coast Guard, 2025.

Cat. No. Fs152-8E-PDF (Electronic PDF, English)  
ISSN 2817-0075

Cat. No. Fs152-8F-PDF (Electronic PDF, French)  
ISSN 2817-0083

A web version is available here:

[Notices to Mariners – Monthly Editions](#) (English)

[Avis aux navigateurs – Publications mensuelles](#) (French)

## Explanatory Notes – Notices to Mariners (NOTMAR)

**Geographical positions** refer directly to the graduations of the largest scale Canadian Hydrographic Service chart (unless otherwise indicated).

**Bearings** refer to the true compass and are measured clockwise from 000° (North) clockwise to 359°; those relating to lights are from seaward.

**Visibility** of lights is that in clear weather.

**Depths** - The units used for soundings (metres, fathoms or feet) are stated in the title of each chart.

**Elevations** are normally given above Higher High Water, Large Tide (unless otherwise indicated).

**Distances** may be calculated as follows:

- 1 nautical mile = 1,852 metres (6,076.1 feet)
- 1 statute mile = 1,609.3 metres (5,280 feet)
- 1 metre = 3.28 feet

### Temporary and Preliminary Notices to Mariners – Section 1A of *Notices to Mariners*

These notices are indicated by a (T) or a (P), respectively. Please note that nautical charts are not amended by the Canadian Hydrographic Service for temporary (T) and preliminary (P) notices. It is recommended that mariners chart these corrections in pencil. For the list of charts affected by (T) & (P) notices, please refer to the current [Notices to Mariners - Monthly Summary of Temporary and Preliminary Notices](#) publication.

### Suggestions and Corrections Form

This form is specifically for suggestions and corrections to Notices to Mariners publications. It is available [online](#) and also in [fillable PDF format](#) included with the monthly publication ZIP file.

To submit comments and suggestions on possible improvements to the various publications and services: [DFO.Notmar-Notmar.MPO@dfo-mpo.gc.ca](mailto:DFO.Notmar-Notmar.MPO@dfo-mpo.gc.ca).

To report chart discrepancies and/or corrections to the *Canadian Sailing Directions* booklets: Fill out the [Marine Information Reporting Form](#) and/or email [chsinfo@dfo-mpo.gc.ca](mailto:chsinfo@dfo-mpo.gc.ca).

To report emergencies or navigational hazards: [Contact your nearest MCTS centre](#)

- VHF channel 16 (156.8 MHz)
- MF/HF frequency 2182 kHz/4125 kHz (where available)
- \*16 on a cellphone (where available)

### NOTMAR Website – Monthly Editions, Chart Corrections and Chart Patches

The NOTMAR website allows users to access the [monthly publications](#), [chart corrections](#), and [chart patches](#).

Users can subscribe for free to the [email notification service](#) to receive notifications when charts of interest are updated, including their patches, as well as when a new Monthly Edition of *Notices to Mariners* is published.

In addition, the monthly publication and related files to download, such as chart patches, can be obtained all together through the download of a single ZIP file.

## Explanatory Notes – Canadian Hydrographic Service (CHS)

### Chart Corrections – Section 2 of *Notices to Mariners*

Corrections to nautical charts will be listed in numerical order by chart number. Each chart correction listed applies only to that particular chart. Related charts, if any, will have their own specific correction listed separately.

Users should also refer to CHS *Chart 1: Symbols, Abbreviations and Terms* for additional information pertaining to the correction of charts.

The illustration below describes the elements that will comprise a typical Section 2 chart correction:

	Chart Number	Chart Title	Chart latest new edition date	Horizontal Chart Datum	Last Correction
Weekly Chart Correction Date	1312	Lac Saint-Pierre - New Edition - 10-MAY-2019 - NAD 1983			
	05-AUG-2022				LN/D. 24-SEP-2021
	Amend			46°03'32.4"N 073°03'21.6"W	
		(See Chart 1 P16)		(Q2022035) LL(2177) DFO(6410690-01)	
	Chart Action	Chart 1 Reference No.	CCG Reference No.	List of Lights No.	CHS Reference No.

The last correction number is identified with the **LN/D** or **Last Notice to Mariners Number / Date**.

Mariners are advised that only the most critical changes that directly affect safety to navigation are issued in "Section 2 – Chart Corrections." This limitation is required to ensure that charts remain as clear and easy to read as possible. As a result, mariners may see minor discrepancies of a non-critical nature between information in official publications. For example, a small change in the nominal range or focal height of a light may not result in the production of a chart correction in *Notices to Mariners*, but may result in a correction in the [List of Lights, Buoys and Fog Signals](#) publication.

Note: In the case of a discrepancy between information provided on CHS charts relating to aids to navigation, and the *List of Lights, Buoys and Fog Signals* publication, the latter shall be deemed as containing the most up-to-date information.

## Explanatory Notes – Marine Communications and Traffic Services (MCTS)

### Navigational Warnings / Notices to Shipping

The Canadian Coast Guard (CCG) is implementing a number of changes to the aids to navigation system in Canada.

These changes are advertised as Navigational Warnings, formerly called Notices to Shipping<sup>1</sup>, that are broadcast by the CCG, and are then followed up with Notices to Mariners, then charts are updated by hand correction, reprints or new editions.

Mariners are advised that all relevant Navigational Warnings (NAVWARN) should be kept until superseded by Notices to Mariners or through revised charts issued by the Canadian Hydrographic Service (CHS).

NAVWARN are accessible on the applicable regional page on the [CCG Navigational Warnings](#).

CHS is reviewing the impact of these changes with CCG and together are preparing an action plan on the issuing of chart revisions.

For further information, contact your regional NAVWARN Issuing Desk.

<b>Atlantic Region (North)</b> <b>*Port aux Basques MCTS Centre</b>  “N” Series NAVWARN  Canadian Coast Guard 49 Stadium Rd. P.O. Box 99 Port aux Basques, NL A0M 1C0  Telephone: 709-695-2168 or 1-800-563-9089 Facsimile: 709-695-7784  Email: <a href="mailto:NAVWARN.MCTSPortAuxBasques@innav.gc.ca">NAVWARN.MCTSPortAuxBasques@innav.gc.ca</a>	<b>Central Region</b> <b>*Prescott MCTS Centre</b>  “Q” and “C” Series NAVWARN  Canadian Coast Guard 401 King Street West P.O. Box 1000 Prescott, ON K0E 1T0  Telephone: 613-925-0666 Facsimile: 613-925-4519  Email: <a href="mailto:NAVWARN.MCTSPrescott@innav.gc.ca">NAVWARN.MCTSPrescott@innav.gc.ca</a>
<b>Atlantic Region (South)</b> <b>*Sydney MCTS Centre</b>  “M” Series NAVWARN  Canadian Coast Guard 1190 Westmount Road Sydney, NS B1R 2J6  Telephone: 902-564-7751 or 1-800-686-8676 Facsimile: 902-564-7662  Email: <a href="mailto:NAVWARN.MCTSSydney@innav.gc.ca">NAVWARN.MCTSSydney@innav.gc.ca</a>	<b>Arctic Region</b> <b>*Iqaluit MCTS Centre</b> <i>Operational from approximately mid-May until late December.</i>  “A” Series NAVWARN  Canadian Coast Guard P.O. Box 189 Iqaluit, NU X0A 0H0  Telephone: 867-979-5269 Facsimile: 867-979-4264  Email: <a href="mailto:NAVWARN.MCTSIqaluit@innav.gc.ca">NAVWARN.MCTSIqaluit@innav.gc.ca</a>

\*Service available in English and in French.

<sup>1</sup> The expression “Notice to Shipping” was changed to “Navigational Warning” in January 2019.

## Table of Contents

<b>Section 1: General and Safety Information</b>	<b>1</b>
*505/23 Canadian Hydrographic Service – Magnetic Declination Calculations .....	1
*1207/23 Canadian Hydrographic Service – Inappropriate Geographical Names Review Process .....	1
*304/25 Canadian Coast Guard – Great Lakes Waterway Information .....	1
*405/25 Saguenay–St. Lawrence Marine Park - Beluga Whale Protection: Slowdown Area at the Mouth of the Saguenay Fjord and Area Closure at Baie Sainte-Marguerite .....	2
*406/25 Saguenay–St. Lawrence Marine Park and Surrounding Waters – Whale Protection .....	4
*501/25 Protecting the North Atlantic Right Whale: Speed Restriction Measures in the Gulf of St. Lawrence .....	6
*502/25 Canadian Hydrographic Service – Nautical Charts.....	14
*503/25 Canadian Hydrographic Service – Electronic Navigational Charts.....	14
*504/25 Transport Canada - Ship Safety Bulletins #05, #06 and #07/2025.....	16
*505/25 Canadian Coast Guard Publication - Amendments to the <i>Notices to Mariners Annual Edition 2025</i> - Section A, Notice 5: General Guidelines for Aquatic Species at Risk and Important Marine Mammal Areas .....	16
*507/25 Donnacona à/to Batiscan – Fixed Aids to Navigation Permanently Discontinued .....	16
*508/25 Kingston Harbour and Approaches/et les approches – Unlit Buoy Permanently Changed .	16
*509/25 Country Island to / à Barren Island – Unlit Buoy Repositioned .....	17
<b>Section 1A: Temporary and Preliminary Notices</b>	<b>18</b>
Reminder – Comment Period for Active Preliminary Notices .....	18
*510(T)/25 Head of / Fond de Placentia Bay – Obstruction: Subsurface Moorings .....	18
*511/25 Cape St Mary's to / à Argentia – Marine Works – Dredging Operations Completed.....	18
*512(T)/25 Baie des Sept-Îles – Marine Works: Wharf Construction .....	19
*513(T)/25 Port de Québec – Marine Works: Wharf Construction .....	19
*514/25 Havre de Gaspé – Aquaculture Sites Charted .....	19
*515(T)/25 Croil Islands to/à Cardinal – Obstruction: Submerged Object.....	19
*516(T)/25 Lake Ontario/Lac Ontario (Western Portion/Partie Ouest) – Marine Works: Pipeline Installation .....	20
*517(P)/25 Lac Saint-Louis – Range Lights to be Abandoned .....	20
*519(P)/25 Scott Islands – Paper Chart to be Discontinued .....	21
<b>Section 2: Chart Corrections</b>	<b>22</b>
<b>Section 3: Radio Aids to Marine Navigation Corrections</b>	<b>36</b>
*520/25 Radio Aids to Marine Navigation 2025 (Atlantic, St. Lawrence, Great Lakes, Lake Winnipeg, Arctic and Pacific).....	36

<b>Section 4: Canadian Sailing Directions Corrections</b>	<b>40</b>
---	-----------

---

<b>Section 5: List of Lights, Buoys and Fog Signals Corrections</b>	<b>41</b>
---	-----------

---

## Numerical Index of Canadian Charts Affected

This numerical index lists all nautical charts mentioned in this monthly edition of Notices to Mariners. Only charts appearing in Section 2 of this publication require a chart correction. The appearance of charts in all other sections, particularly those related to the correction of other nautical publications, is included here for reference.

Chart No.	Pages	Chart No.	Pages	Chart No.	Pages
1220	<a href="#">19</a>	4455	<a href="#">24, 25</a>	7685	<a href="#">34</a>
1230	<a href="#">22</a>	4459	<a href="#">25, 26</a>	7777	<a href="#">34, 35</a>
1234	<a href="#">18</a>	4464	<a href="#">18</a>	8006	<a href="#">35</a>
1313	<a href="#">22</a>	4523	<a href="#">26</a>	14853 (U.S.)	<a href="#">1</a>
1314	<a href="#">16</a>	4530	<a href="#">26, 27</a>	14882 (U.S.)	<a href="#">1</a>
1316	<a href="#">19</a>	4585	<a href="#">27</a>	14883 (U.S.)	<a href="#">1</a>
1430	<a href="#">20, 42</a>	4587	<a href="#">27</a>	14884 (U.S.)	<a href="#">1</a>
1434	<a href="#">19</a>	4592	<a href="#">27</a>		
1439	<a href="#">22</a>	4663	<a href="#">28</a>		
2017	<a href="#">16, 22, 42</a>	4667	<a href="#">28</a>		
2020	<a href="#">22</a>	4679	<a href="#">28</a>		
2021	<a href="#">23</a>	4680	<a href="#">28</a>		
2050	<a href="#">42</a>	4821	<a href="#">28</a>		
2059	<a href="#">23</a>	4823	<a href="#">29</a>		
2077	<a href="#">20</a>	4832	<a href="#">29</a>		
2123	<a href="#">42</a>	4839	<a href="#">18</a>		
3625	<a href="#">21</a>	4841	<a href="#">18</a>		
3874	<a href="#">14</a>	4847	<a href="#">29</a>		
4013	<a href="#">23</a>	4862	<a href="#">29</a>		
4015	<a href="#">23</a>	4913	<a href="#">29, 30, 41</a>		
4021	<a href="#">23</a>	4958	<a href="#">30</a>		
4022	<a href="#">23</a>	5410	<a href="#">30</a>		
4026	<a href="#">23</a>	5450	<a href="#">31</a>		
4116	<a href="#">18, 23, 41</a>	5510	<a href="#">18</a>		
4141	<a href="#">24</a>	5533	<a href="#">31</a>		
4201	<a href="#">24</a>	6241	<a href="#">31</a>		
4209	<a href="#">24</a>	7010	<a href="#">31, 32</a>		
4234	<a href="#">17</a>	7011	<a href="#">32</a>		
4278	<a href="#">24</a>	7065	<a href="#">32, 33</a>		
4302	<a href="#">24</a>	7125	<a href="#">43</a>		
4374	<a href="#">18</a>	7127	<a href="#">43</a>		
4375	<a href="#">24</a>	7405	<a href="#">33</a>		
4377	<a href="#">24</a>	7568	<a href="#">34</a>		
4416	<a href="#">19</a>	7661	<a href="#">34</a>		



## Section 1: General and Safety Information

---

### **\*505/23 Canadian Hydrographic Service – Magnetic Declination Calculations**

(Recurrent publication of notice \*505/23, originally published in the *Notices to Mariners – Monthly Eastern Edition* 05/2023 publication.)

Mariners are advised that CHS has adopted the harmonized World Magnetic Model (WMM), as found on the NCEI/NOAA website. Old compass rose declination information on CHS navigational products can be updated using this website: <https://www.ngdc.noaa.gov/geomag/calculators/magcalc.shtml#declination>. While the differences in the model declinations are small each year, they can become more significant over a large period of time.

### **\*1207/23 Canadian Hydrographic Service – Inappropriate Geographical Names Review Process**

(Recurrent publication of notice \*1207/23, originally published in the *Notices to Mariners – Monthly Eastern Edition* 12/2023 publication.)

The records of the Canadian Hydrographic Service could contain geographical names that may be considered inappropriate, offensive and derogatory. Geographical naming authorities are in the process of addressing many offensive place names, the review process is underway. For more information, about inappropriate geographical names, please see the [following announcement](#).

### **\*304/25 Canadian Coast Guard – Great Lakes Waterway Information**

(Recurrent publication of notice \*304/25, originally published in the *Notices to Mariners – Monthly Eastern Edition* 03/2025 publication.)

Reference chart: 14853 (U.S.), 14882 (U.S.), 14883 (U.S.), 14884 (U.S.)

Updated shoaling conditions for the navigational channels in the Great Lakes are available on the Canadian Coast Guard websites:

[CCG e-Nav - Shoals in the Detroit River](#)

[CCG e-Nav - Shoals in the St. Clair River](#)

[CCG e-Nav - Shoals in the St. Mary's River](#)

Great Lakes Waterways Channel Bottom Conditions and Active Shoals are available at the website:

[GCC - e-Nav Portal - Central - Great Lakes Waterways - Channel Bottom Conditions](#)

Areas		
Detroit River	North Channel	St. Clair River
Great Lakes	Lake Huron	St. Marys River
Lake Erie	Lake St. Clair	Whitefish Bay

**\*405/25 Saguenay–St. Lawrence Marine Park - Beluga Whale Protection: Slowdown Area at the Mouth of the Saguenay Fjord and Area Closure at Baie Sainte-Marguerite**

(Recurrent publication of notice \*405/25, originally published in the *Notices to Mariners – Monthly Eastern Edition* 04/2025 publication.)

The Saguenay–St. Lawrence Marine Park and its surrounding area are at the heart of endangered beluga whale critical summer habitat. Marine mammal protection measures have been put in place in accordance with the *Marine Activities in the Saguenay–St. Lawrence Marine Park Regulations* within the limits of the Marine Park.

However, important feeding, calving and rearing areas for beluga whales require greater protection to ensure the recovery of the species. The portion of the Saguenay situated between the mouth of the Fjord and Baie Sainte-Marguerite is one of the areas most used by females and their young from May to October. The mouth of the Saguenay is known as a feeding ground and Baie Sainte-Marguerite as a calving and rearing area.

In order to prevent collisions with beluga whales, a compulsory 15-knot slowdown area is in effect from May 1st to October 31st at the mouth of the Saguenay. To ensure tranquility for female belugas and their young during the critical calving period, access to Baie Sainte-Marguerite is prohibited to all vessels from June 21st to September 21st, except for special authorizations (see description below).

For safety reasons, the slowdown area measure at the mouth of the Saguenay Fjord does not apply to cargo ships (see the monthly edition of Notice to Mariners from May to October for voluntary protection measures in the St. Lawrence Estuary). An enhanced vigilance is, however, recommended to all navigators between the mouth of the Saguenay Fjord and Baie Sainte-Marguerite for the protection of beluga whales.

For more information on the Saguenay–St. Lawrence Marine Park, see notice 5C of the *Notices to Mariners Annual Edition 2025* or visit the [Saguenay-St. Lawrence Marine Park website](#).

**REGULATORY PROTECTION MEASURES — BELUGA WHALE**

**Entire Marine Park Territory:**

- When beluga whales are less than half a nautical mile (926 metres) from a motorized vessel, the vessel must maintain a steady speed of between 5 and 10 knots.
- All vessels, including human-powered vessels (kayaks and canoes), must continue to move forward and maintain their heading.
- All vessels must maintain a minimum distance of 400 metres from beluga whales at all times.

For more information concerning the regulations, consult the [“Navigate” section of the Saguenay-St. Lawrence Marine Park website](#).

**Mouth of the Saguenay Fjord (Figure 1) — Slowdown Area (area crosshatched in red):**

- Maximum speed at the mouth of the Saguenay between buoys S7 and S8 and the ferry docks between Baie-Sainte-Catherine and Tadoussac is 15 knots from May 1<sup>st</sup> to October 31<sup>st</sup>.

**Baie Sainte-Marguerite (Figure 2) — Area Closure (red area):**

- From June 21st to September 21st, vessels must not enter the red area, which follows a line between Cap Nord-Ouest and Cap Sainte-Marguerite.
- Special authorizations are granted only for kayaks, canoes and recreational fishermen who must travel without stopping along a corridor within 10 metres of the shore or in shallow areas.

## VOLUNTARY PROTECTION MEASURES

### Baie Sainte-Marguerite sector (Figure 2) — Transit Area (area crosshatched in yellow):

- From June 21st to September 21st, navigation in this area is recommended at a speed of between 5 and 10 knots without stopping.

The purpose of this transit area is to favour respect of the *Marine Activities in the Saguenay–St. Lawrence Marine Park Regulations*, since beluga whales are often present in the Baie Sainte-Marguerite sector.

### Information

All incidents, including collisions with whales, must be reported without delay by calling 1-866-508-9888. For any other situation concerning a marine mammal that is either dead or in trouble, contact the Marine Mammal Emergency Response Network at 1-877-722-5346, or use VHF channel 16.

Figure 1

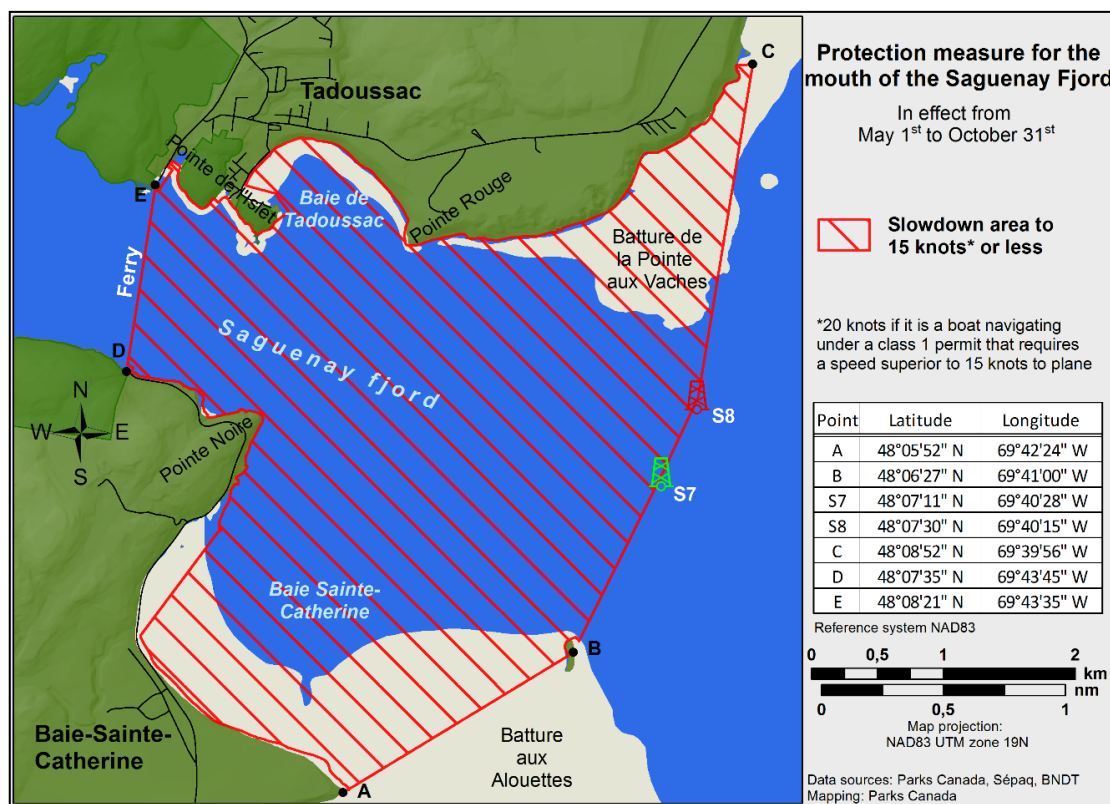
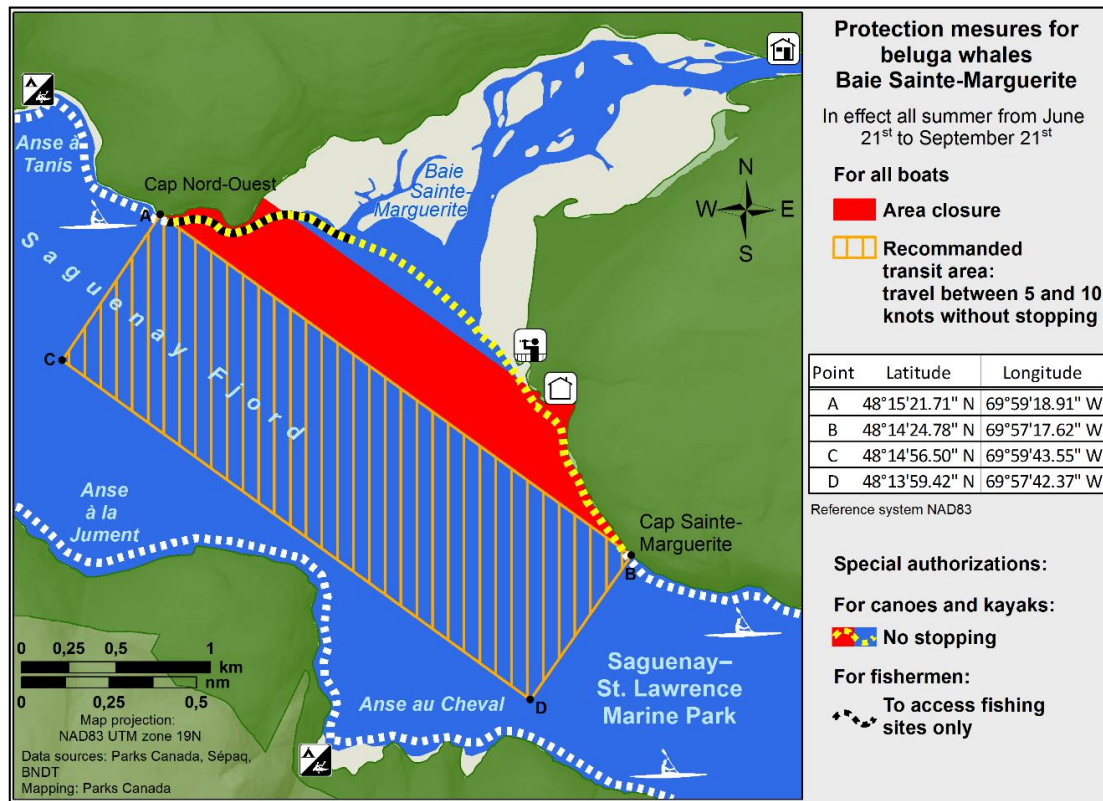


Figure 2



#### \*406/25 Saguenay–St. Lawrence Marine Park and Surrounding Waters – Whale Protection

(Recurrent publication of notice \*406/25, originally published in the *Notices to Mariners – Monthly Eastern Edition* 04/2025 publication.)

The waters in and around the Saguenay–St. Lawrence Marine Park are well known for the resident endangered beluga population and the wide diversity of whales that migrate there to feed, particularly between April and November.

#### REGULATORY PROTECTION MEASURES

All whale species that are found in the St. Lawrence are protected under the *Marine Mammal Regulations*, pursuant to the *Fisheries Act*. Within the boundaries of the Marine Park, specific measures are set out in the *Marine Activities in the Saguenay–St. Lawrence Marine Park Regulations*, pursuant to the establishment of the *Saguenay–St. Lawrence Marine Park Act*. Any collision with a marine mammal within the Marine Park must immediately be reported to a park warden at 1-866-508-9888. For collisions that occur outside the Marine Park or for any situation involving a marine mammal that is dead or in trouble, contact the emergency network at 1-877-722-5346 or on VHF channel 16.

For more information on the Saguenay–St. Lawrence Marine Park, see notice 5C of the *Notices to Mariners Annual Edition 2025*.



## VOLUNTARY PROTECTION MEASURES

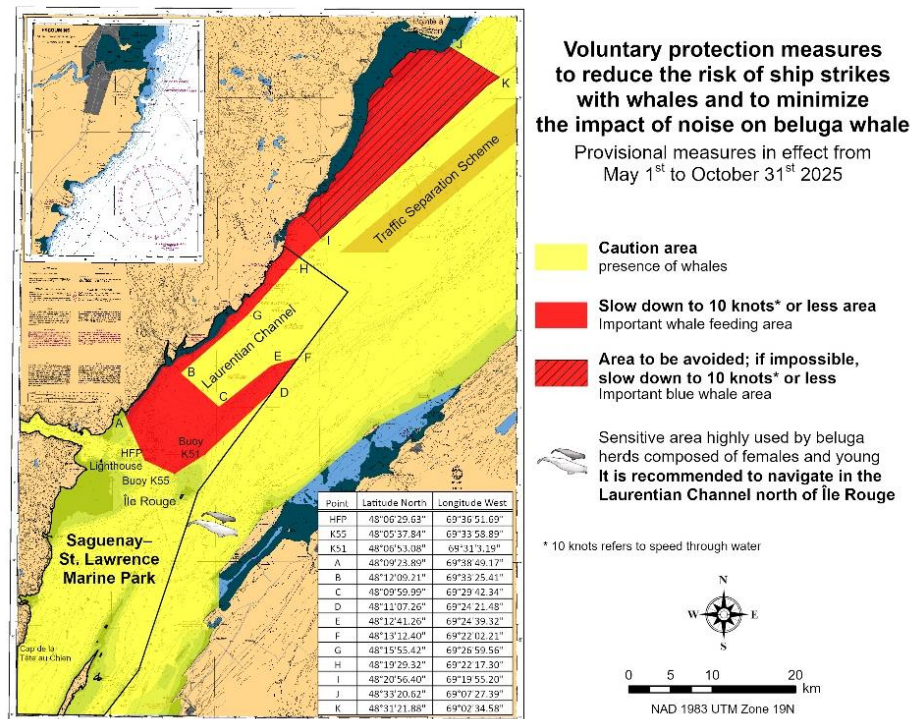
Provisional measures in effect from May 1 to October 31, 2025. See map at the end of this notice.

These measures apply to merchant vessels and cruise ships between Pointe à Boisvert and Cap de la Tête au Chien to prevent collisions with whales. These measures should only be taken when they will not jeopardize navigational safety.

**Caution area (yellow area):** To reduce the risk of collisions with whales that can be present anywhere in this area, heightened vigilance of navigators is critical. Posting a lookout is recommended in order to increase the chances of seeing the whales and thus taking necessary measures to avoid them. If bypassing the whales is not possible, slow down and wait for the animals to move away to a distance greater than 400 metres (0.215 nautical miles) before resuming original speed. It is more difficult to see the animals at night therefore increased caution is recommended.

**Slow down to 10 knots or less area (red area):** To reduce the risk of collisions with whales in this feeding area, it is recommended that vessels slow down to a maximum speed through the water of 10 knots and post a lookout. It is further recommended to remain in the Laurentian Channel to the north of Île Rouge to minimize the impact of noise in a sensitive area south of this island, which is highly frequented by herds of beluga whales composed of females and young.

**Area to be avoided (hatched red area):** To reduce noise and the risk of collisions with whales, vessels should avoid transiting through this area which is highly frequented by blue whales, an endangered species. If the area cannot be avoided, slow down to a speed through the water of 10 knots or less.



## **\*501/25 Protecting the North Atlantic Right Whale: Speed Restriction Measures in the Gulf of St. Lawrence**

Reference: Notice 401/25 is cancelled

### **Purpose**

This notice describes the speed and navigational restriction zones that vessels must follow in the Gulf of St. Lawrence.

The **Government** of Canada has established these zones to reduce the risk of vessel colliding with North Atlantic right whales (NARW).

### **Background**

Due to changing migration patterns of North Atlantic right whales and their increased presence in the Gulf of St. Lawrence, the Government of Canada has set seasonal speed restrictions in specific zones. These speed restrictions zones are defined as “static zones”, “dynamic shipping zones”, “seasonal management areas”, a “voluntary seasonal slowdown zone” and a “restricted area”. [See the map below for details.](#)

Note: Vessels **must follow** Navigational Warnings outlining the speed restrictions. The *Interim Order No.2 for the Protection of North Atlantic Right Whales (Eubalaena Glacialis) in the Gulf of St. Lawrence, 2025* enables the issuance of Navigational Warnings (NAVWARNs) imposing speed restrictions and navigation restrictions.

Speed restriction zones are described in monthly Notices to Mariners (NOTMARs), which are published by the Canadian Coast Guard. The status of these zones is broadcasted through NAVWARNs, which are published by the Coast Guard’s Marine Communications and Traffic Services Centres.

### **CHANGES TO SPEED RESTRICTION ZONES AND MEASURES**

Based on consultations with industry and on scientific data, changes to the speed restriction zones are effective since April 16<sup>th</sup>, 2025, while the restricted area will be implemented based on whale presence.

A voluntary seasonal slowdown of 10.0 knots over the ground spanning from Cabot Strait (a line running from Cape North NS to Cape Ray NL) to the eastern edge of dynamic shipping zone E will be implemented at the beginning and end of the North Atlantic right whale season (Spring and fall).

Please check the latest NAVWARN for all speed restrictions currently in effect.

### **SPEED RESTRICTION MEASURES FOR 2025**

These restrictions are in effect from **April 16 to June 14, 2025.**

**Note: This is the second interim order for the 2025 North Atlantic Right Whale (NARW) season, which started on April 16<sup>th</sup>, during the 2025 federal election period. The first was signed for a 30-day period, to provide protection for the species, while meeting Caretaker Convention requirements. This Interim Order extends the protective measures for 30 days to provide continuity while Cabinet is formed.**

#### **Exceptions**

The following exception will apply to **all** measures:

- a) a vessel in distress or providing assistance to a person or a vessel in distress;
- b) a government vessel being used:
  - i) for law enforcement activities;
  - ii) for search and rescue operations; or
  - iii) to ensure the competency of the crew or the operational readiness of the vessel or crew with respect to such activities or operations.

## STATIC ZONES

In the static zones, **all** vessels above **13 m** in length overall (LOA) must proceed at a speed of not more than 10.0 knots over the ground.

### Exclusions

Air cushion vessels operated by or on behalf of the Government of Canada that are engaged in ice-clearing activities from April to June in and around Chaleur Bay are exempted when in operation.

### 36.57 m (20-fathom) shallow water protocol exclusion

Vessels engaged in any commercial fishing activity may proceed at a safe operational speed in waters not more than 36.57 m (20 fathoms) deep within the static zones.

If a notice to fish harvesters and a NAVWARN state that at least one North Atlantic right whale has been detected in waters within a static zone or its associated buffer zone that are not more than 36.57m deep, the speed limit of 10.0 knot over the ground will apply in the concerned zone(s) to all vessels above 13 m in length overall (LOA). The speed restriction will be in effect for 15 days after the day on which the whale was detected. The buffer zones associated with the static zones are located 5 miles north and south of their adjacent border in waters less than 36.57m deep.

#### Coordinates for the northern static zone:

- 50° 20' N 065° 00' W
- 49° 13' N 065° 00' W
- 48° 40' N 064° 13' W
- 48° 40' N 062° 40' W
- 48° 03' N 061° 07.5' W
- 47° 58.1' N 061° 03.5' W
- 48° 00' N 061° 00' W
- 49° 04' N 061° 00' W
- 49° 04' N 062° 00' W
- 49° 43' N 063° 00' W
- 50° 20' N 063° 00' W

#### Coordinates for the southern static zone:

- 48° 40' N 065° 00' W
- 48° 40' N 062° 40' W
- 48° 03' N 061° 07.5' W
- 47° 58.1' N 061° 03.5' W
- 47° 10' N 062° 30' W
- 47° 10' N 065° 00' W

## DYNAMIC SHIPPING ZONES

There are five dynamic shipping zones (DSZ) located in the routing systems north and south of Anticosti Island: A, B, C, D and E

### Coordinates for the dynamic shipping zones:

Zone A	Zone B	Zone C
<ul style="list-style-type: none"><li>• 49° 41' N, 065° 00' W</li><li>• 49° 20' N, 065° 00' W</li><li>• 49° 11' N, 064° 00' W</li><li>• 49° 22' N, 064° 00' W</li></ul>	<ul style="list-style-type: none"><li>• 49° 22' N, 064° 00' W</li><li>• 49° 11' N, 064° 00' W</li><li>• 48° 48' N, 063° 00' W</li><li>• 49° 00' N, 063° 00' W</li></ul>	<ul style="list-style-type: none"><li>• 49° 00' N, 063° 00' W</li><li>• 48° 48' N, 063° 00' W</li><li>• 48° 24' N, 062° 00' W</li><li>• 48° 35' N, 062° 00' W</li></ul>
Zone D	Zone E	
<ul style="list-style-type: none"><li>• 50° 16' N, 064° 00' W</li><li>• 50° 00' N, 064° 00' W</li><li>• 49° 56' N, 063° 00' W</li><li>• 50° 16' N, 063° 00' W</li></ul>	<ul style="list-style-type: none"><li>• 48° 35' N 062° 00' W</li><li>• 48° 24' N 062° 00' W</li><li>• 48° 03' N 061° 07.5' W</li><li>• 47° 58.1' N 061° 03.5' W</li><li>• 48° 00' N 061° 00' W</li><li>• 48° 10.5' N 061° 00' W</li></ul>	

When a North Atlantic right whale is detected in a dynamic shipping zone or in the buffer zones, located 5 nautical miles south or 2.5 nautical miles from the eastern and western edges of the dynamic shipping zones:

- All vessels will be notified via a NAVWARN; and
- Vessels above **13 m** in length overall (LOA) must proceed at a speed of not more than 10.0 knots over the ground within that zone.

Even though dynamic shipping zones overlap with static zones, vessels can travel at a safe operational speed in dynamic shipping zones when they are not under speed restriction. Mariners must also keep in mind that North Atlantic right whales may be nearby.

## SPEED RESTRICTIONS IN THE DYNAMIC SHIPPING ZONES

The detection of North Atlantic right whales in one or more dynamic shipping zone(s), or in their buffer zones, will trigger a speed restriction in the concerned zone(s). The speed restriction in the dynamic shipping zone(s) will be in effect for 15 days from the date of detection. In the event of a new North Atlantic right whale detection occurring in the last 7 days of the 15-day slowdown period, the speed restriction will be extended for an additional 15 days from the date of the new detection. This would continue until no NARW are detected.

When a NAVWARN is issued implementing a speed restriction in one or more dynamic shipping zone(s), vessels above **13 m** in length (LOA) must not exceed a speed of 10.0 knots over the ground. Within any dynamic zone that is not subject to a speed restriction, mariners may proceed at a safe operational speed. Mariners are encouraged to take into consideration the potential for their vessel striking North Atlantic right whales when considering a “safe operational speed” during navigation.



## SEASONAL MANAGEMENT AREAS

Seasonal management area 1 (SMA-1) and seasonal management area 2 (SMA-2) are speed restriction areas located north and south of dynamic shipping zone E, respectively.

Within seasonal management areas, vessels above **13 m** in length (LOA):

- must restrict their speed so as not to exceed 10.0 knots over the ground from April 16th to June 14th, 2025

### Coordinates for the SMA-1:

- 49° 04' N 062° 00' W
- 49° 04' N 061° 00' W
- 48° 10.5' N 061° 00' W
- 48° 35' N 062° 00' W

### Coordinates for the SMA-2:

- 48° 24' N 062° 00' W
- 48° 03' N 061° 07.5' W
- 47° 58.1' N 061° 03.5' W
- 47° 26.69' N 062° 00' W

## RESTRICTED AREA

In the summer months, an important proportion of the total North Atlantic right whale population gathers for feeding and surface activity near the [Shediac Valley](#). Since this makes the North Atlantic right whale more susceptible to vessel collisions, a mandatory restricted area will be implemented in and near the Shediac Valley and will come into force once 80% of the restricted area is closed to fishing for the season as per the [Department of Fisheries and Oceans' right whale closure protocol](#). The restricted area will be lifted once the North Atlantic right whale detections decrease in the restricted area.

The size and location of the area are determined based on historical detection data of North Atlantic right whales. All necessary details can be found in the *Interim Order No.2 for the Protection of North Atlantic Right Whales (Eubalaena Glacialis) in the Gulf of St. Lawrence, 2025*. Triggering and lifting of the restricted area will be communicated to mariners through NAVWARNs and notices to fish harvesters.

Vessels above **13 m** in length (LOA) will be required to:

- avoid the area unless they are part of the exceptions listed in the *Interim Order No.2 for the Protection of North Atlantic Right Whales (Eubalaena Glacialis) in the Gulf of St. Lawrence, 2025*;
- transit the area at a speed not exceeding 8.0 knots over the ground if they are part of the exceptions.

The following exceptions will apply to the restricted area. The following listed vessels can travel through the area at not more than 8.0 knots over the ground:

- A vessel being used for commercial fishing;
- A vessel being used for fishing under the authority of a licence issued under the *Aboriginal Communal Fishing Licences Regulations*;
- A vessel being used for research purposes on behalf of the Government of Canada
- A vessel being used as part of the Department of Fisheries and Oceans' Marine Mammal Response Program to assist a marine mammal or sea turtle in distress or to access or retrieve a deceased marine mammal or sea turtle;
- A vessel authorized by the Government of Canada to retrieve or identify the location of abandoned or lost fishing gear;
- A vessel involved in pollution response operations;
- A vessel avoiding immediate or unforeseen danger;
- A vessel involved in research relating to right whales as part of a project that has received funding from the Government of Canada.

The following vessels can travel through the restricted area at a speed over 8.0 knots, but below 10.0 knots over the ground as required by the static speed restriction zone:

- A vessel being used by an employee of the Government of Canada or peace officer who is performing their duties.

**Coordinates for the restricted area:**

- 48°31.8' N 063°39.6' W
- 48°24.72' N 063°17.88' W
- 47°18.84' N 064°10.8' W
- 47°27.18' N 064°30.72' W

**Inclement weather exception**

Mariners will be notified in advance via a NAVWARN should the speed restriction status change in any zone or area, due to inclement weather.

Within any zone or area that is no longer subject to a speed restriction due to adverse weather conditions, mariners may proceed at a safe operational speed. Mariners are however encouraged to take into consideration the potential for their vessel striking North Atlantic right whales when considering a “safe operational speed” during navigation.

\*Non-excepted vessels are still prohibited from transiting through the restricted area.

**VOLUNTARY SEASONAL SLOWDOWN IN CABOT STRAIT**

To coincide with the North Atlantic right whales entering and exiting the Gulf of St. Lawrence in large numbers, a voluntary seasonal slowdown is being put in place in Cabot Strait from April 16<sup>th</sup> to June 24<sup>th</sup>, 2025, and from September 3<sup>rd</sup> to November 15<sup>th</sup>, 2025.

- During these periods, vessels above 13 m in length (LOA) are requested to voluntarily reduce their speed as to not exceed 10.0 knots over the ground.

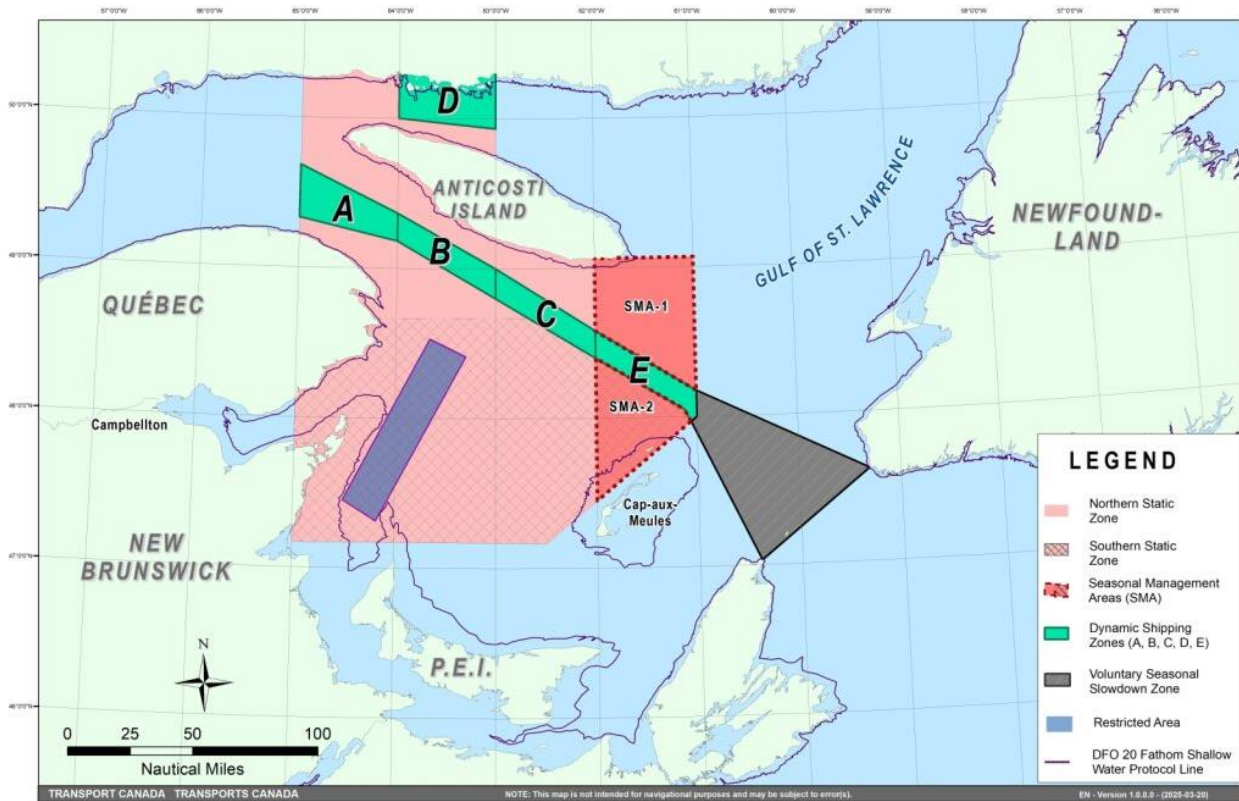
**Voluntary seasonal slowdown zone coordinates:**

- 48° 10.5' N 061° 00' W
- 47° 37.2' N 059° 18.5' W
- 47° 02' N 060° 23.7' W
- 47° 58.1' N 061° 03.5' W
- 48° 00' N 061° 00' W

**Map of the Gulf of St. Lawrence**

The following map shows

- the static zones (north and south), in pink;
- the dynamic shipping zones (A, B, C, D and E), in green;
- the seasonal management areas, in dark pink;
- the voluntary seasonal slowdown zone, in grey;
- the restricted area, in dark blue; and
- the 36.57 m (20 fathoms) shallow water protocol line.



This map is for visual representation only and is not to be used for navigation or enforcement.

### ROSEWAY BASIN – AREA TO BE AVOIDED

The Roseway Basin, located approximately 20 nautical miles south of Cape Sable Island, Nova Scotia, is a critical habitat for North Atlantic right whales, which have been observed to gather in the area on a seasonal basis in Canadian waters. This critical habitat is also located near key shipping routes. In 2007, Canada, with the support of many groups with varied interests, proposed to the International Maritime Organization (IMO) the establishment of a seasonal Area to be Avoided in the Roseway Basin to protect North Atlantic right whales, which IMO accepted and adopted.

To reduce the risk of vessels colliding with North Atlantic right whales, it is recommended that vessels of 300 gross tonnages and more, in transit during the period of June 1 through December 31, avoid the Roseway Basin area. Smaller vessels are also encouraged to avoid passage through this area. If passage is necessary within the Area to be Avoided, it is recommended that all mariners decrease their vessel speed to no more than 10 knots, when safe to do so.

#### Roseway Basin coordinates:

- 43° 16' N 064° 55' W
- 42° 47' N 064° 59' W
- 42° 39' N 065° 31' W
- 42° 52' N 066° 05' W

## **BAY OF FUNDY – VOLUNTARY SLOWDOWN**

The Grand Manan Basin located in the Bay of Fundy is identified as a critical habitat for the North Atlantic right whale. When North Atlantic right whales are detected in the Bay of Fundy shipping lanes and near the Grand Manan Basin area, the Fundy Traffic will ask vessels to voluntarily slowdown to 10 knots via VHF channel 12 or 14 at corresponding Calling-in-Points.

## **NAVWARN BROADCASTS**

The Canadian Coast Guard issues NAVWARNs:

- by radio broadcast; and
- online at [Canada's Maritime Information Portal](#) and its [Navigational Warnings](#) site, using the [North Atlantic Right Whale](#) category.

Mariners must ensure they have accurate and up-to-date information about the protection of the North Atlantic right whale, as in all applicable NOTMARs and NAVWARNs.

For the North Atlantic right whale speed restrictions, the NAVWARN(s) currently in effect will be provided to vessels subject to the *Vessel Traffic Services Zone Regulations* or the *Eastern Canada Vessel Traffic Services Zone Regulations*:

### **Outbound vessels will receive NAVWARNs**

- at Calling-in-Point 10 (St-Laurent); or
- upon a departure downstream from the Quebec pilot station (including the Saguenay River, Chaleur Bay, Miramichi Bay, etc.)

### **Inbound vessels will receive NAVWARNs**

- when a clearance to enter Canadian waters is granted

### **Vessels in transit will receive NAVWARNs**

- at the last reporting point prior to entering the mandatory speed restriction zones; and/or
- at 10 nautical miles before they enter the mandatory speed restriction zones

For those vessels not subject to the above-mentioned regulations, vessel operators are required to monitor broadcasts by the Canadian Coast Guard's Marine Communications and Traffic Services network for the most up to date information. For marine radio frequencies and broadcast times, information may be found in the [Radio Aids to Marine Navigation](#) publication.

## **AIDS TO NAVIGATION**

The Canadian Coast Guard broadcasts virtual Automatic Identification System (AIS) aids to navigation (AIS AtoN) in specific areas. These aids may notify mariners of dynamic shipping zones and/or seasonal management areas subject to speed restrictions.

Each zone is delimited by four to six virtual AIS AtoN, which can be displayed on a ship's navigation equipment, such as

- Electronic Chart Display and Information System (ECDIS);
- Electronic Chart System (ECS);
- RADAR;
- Minimum Keyboard Display (MKD); and
- Electronic Nautical Chart (ENC).

The Canadian Coast Guard broadcasts the virtual AIS AtoN only when a speed restriction is in effect in one or more testing zones.

Mariners must select the virtual AIS AtoN symbol to view a message such as “SectA1 Spd Lim 10 kt.” This message refers to a speed restriction in effect for a specific zone.

Note: This system is not the primary method of communicating this information.

## COMPLIANCE AND ENFORCEMENT

Vessels must comply with the Interim Orders made pursuant to the *Canada Shipping Act, 2001*, and any NAVWARNs broadcasted and published by the Canadian Coast Guard relating to the Interim Orders, aimed at regulating the navigation for the purposes of protecting the North Atlantic right whales.

If a vessel does not comply with the Interim Orders or instructions in the NAVWARNs related to the Interim Orders, the vessel could face:

- administrative monetary penalties up to a maximum of CAN \$250,000; and/or
- penal sanctions under the *Canada Shipping Act, 2001* is liable on summary conviction to a fine of not more than CAN \$1,000,000 or to imprisonment for a term of not more than 18 months, or to both.

If a vessel appears to have violated the speed restriction, Transport Canada Marine Safety inspectors will review all information provided through AIS and seek an explanation from the master.

No exemptions to the speed restriction will be granted in advance. However, if a deviation from the speed restrictions is necessary for safety reasons, the following information must be entered into the bridge logbook:

- reason(s) for deviation;
- speed at which vessel is operated;
- latitude and longitude at time of deviation;
- time and duration of deviation; and
- master of the vessel shall sign and date the bridge logbook entry.

For any deviation, Transport Canada will review and consider reasons such as:

- navigating to ensure vessel safety;
- weather conditions;
- force majeure (unforeseeable circumstances); and
- responding to emergencies.

## REPORT A NORTH ATLANTIC RIGHT WHALE SIGHTING

If you see **live, free-swimming whales**:

- **Email:** [DFO.GLFWholes-BaleinesGLF.MPO@dfo-mpo.gc.ca](mailto:DFO.GLFWholes-BaleinesGLF.MPO@dfo-mpo.gc.ca)
- When reporting sightings of North Atlantic right whales, you must include: GPS location (latitude and longitude), date and time of sighting, number of marine mammals, **photograph(s)/video(s) collected** and if possible, behavior of marine mammals observed (ex., feeding, travelling, diving).

## SIGHTINGS OF ENTANGLED, INJURED OR DEAD NORTH ATLANTIC RIGHT WHALE

If you see a North Atlantic right whale (and all other marine mammals) **entangled, injured or dead**, please document and report it immediately to the regional Response Network.

- When documenting you should collect: GPS location (latitude and longitude), date and time of sighting, number of marine mammals, photograph(s)/video(s), and description of the incident to provide to the Response Network.

**Southern part of the Gulf of St. Lawrence (New Brunswick, Nova Scotia & Prince Edward Island)**

Marine Animal Response Society  
Telephone: 1-866-567-6277

**Newfoundland and Labrador**

Whale Release and Strandings Newfoundland and Labrador (Tangly Whales Inc.)  
Telephone: 1-888-895-3003 or 1-709-895-3003

**Québec**

Réseau québécois d'urgences pour les mammifères marins (RQUMM)  
Telephone: 1-877-722-5346

**Report a marine mammal or sea turtle incident or sighting:**

Visit the website for more information on [reporting other marine mammal or sea turtle sighting](#) and incidents.

Please consult [Whale Insight](#) for the latest right whale observations.

**\*502/25 Canadian Hydrographic Service – Nautical Charts**

Charts	Main Title	Scale	Edition Date	Published	Cat#	Price
<b>New Charts</b>						
3874	Rennell Sound	1:45 000	2025-03-21	2025-05-02	2	\$20.00

**\*503/25 Canadian Hydrographic Service – Electronic Navigational Charts**

S-57 ENC Number	Chart Title	ENC Compilation Scale	Published
<b>New Charts</b>			
CA28GP1A (Edn 1.000)	CA28GP1A	1:175 000	2025-05-02
CA47VNEA (Edn 1.000)	CA47VNEA_5800N070W	1:22 500	2025-05-02
CA54CQGA (Edn 1.000)	CA54CQGA	1:6 000	2025-05-09
CA54CQLA (Edn 1.000)	CA54CQLA	1:11 000	2025-05-09
CA54CQMA (Edn 1.000)	CA54CQMA	1:11 000	2025-05-09
CA54CQNA (Edn 1.000)	CA54CQNA	1:11 000	2025-05-09
CA54PTMA (Edn 1.000)	CA54PTMA	1:2 000	2025-05-02
CA54PTNA (Edn 1.000)	CA54PTNA	1:2 000	2025-05-02
CA571505 (Edn 1.000)	CA571505	1:11 000	2025-05-02
CA571506 (Edn 1.000)	CA571506	1:11 000	2025-05-02
CA571507 (Edn 1.000)	CA571507	1:11 000	2025-05-02
CA571508 (Edn 1.000)	CA571507	1:11 000	2025-05-02
CA582NEA (Edn 1.000)	CA582NEA	1:6 000	2025-05-02
CA582NFA (Edn 1.000)	CA582NFA	1:6 000	2025-05-02
CA583NEA (Edn 1.000)	CA583NEA	1:6 000	2025-05-02
CA583NFA (Edn 1.000)	CA583NFA	1:6 000	2025-05-02

S-57 ENC Number	Chart Title	ENC Compilation Scale	Published
CA584NEA (Edn 1.000)	CA584NEA	1:6 000	2025-05-02
CA584NFA (Edn 1.000)	CA584NFA	1:6 000	2025-05-02
CA58FL5A (Edn 1.000)	CA58FL5A	1:11 000	2025-05-02
CA58FL6A (Edn 1.000)	CA58FL6A	1:11 000	2025-05-02
CA58GL5A (Edn 1.000)	CA58GL5A	1:11 000	2025-05-02
CA58GL6A (Edn 1.000)	CA58GL6A	1:11 000	2025-05-02
CA58GL7A (Edn 1.000)	CA58GL7A	1:11 000	2025-05-02
<b>New Editions</b>			
CA43XMHA (Edn 2.000)	Transit4500N07300W	1:11 000	2025-05-09
CA448MTA (Edn 4.000)	Transit4600N07200W	1:11 000	2025-05-23
CA44URRA (Edn 2.000)	CA44URRA	1:22 500	2025-05-23
CA47KR5A (Edn 2.000)	CA47KR5A	1:90 000	2025-05-09
CA549QGA (Edn 2.000)	Charlottetown Harbour South	1:6 000	2025-05-30
CA54AQGA (Edn 3.000)	CA54AQGA	1:6 000	2025-05-30
CA54AR9A (Edn 2.000)	CA54AR9A	1:11 000	2025-05-23
CA54BMMA (Edn 2.000)	Port4630N07260W	1:6 000	2025-05-23
CA54BMNA (Edn 2.000)	Port4630N07250W	1:6 000	2025-05-23
CA54BMPA (Edn 2.000)	Port4630N07240W	1:6 000	2025-05-23
CA54EMUA (Edn 2.000)	Port4660N07190W	1:2 000	2025-05-23
CA54EMXA (Edn 2.000)	Port4660N07160W	1:2 000	2025-05-23
CA54FN0A (Edn 2.000)	Port4670N07140W	1:6 000	2025-05-23
CA54FN1A (Edn 2.000)	Port4670N07130W	1:6 000	2025-05-23
CA54FN2A (Edn 2.000)	Port4670N07120W	1:6 000	2025-05-23
CA54GN1A (Edn 3.000)	Port4680N07130W	1:6 000	2025-05-23
CA54GN2A (Edn 2.000)	Port4680N07120W	1:6 000	2025-05-23
CA54VPNA (Edn 2.000)	Port4810N06590W	1:2 000	2025-05-09
CA54XQ3A (Edn 2.000)	Port4830N06450W	1:4 000	2025-05-09
CA54YQ4A (Edn 2.000)	Port4840N06440W	1:2 000	2025-05-09
CA570174 (Edn 6.000)	Malaspina Inlet, Okeover Inlet and/et Lancelot Inlet	1:6 000	2025-05-16
<b>Charts Permanently Withdrawn</b>			
CA473438	Passage aux Feuilles	Cancelled by CA47VNEA	
CA473439	Lac aux Feuilles	Cancelled by CA47VNEA	
CA473490	Puvirnituk		
CA573412	Tasiujaq		
CA576386	St. John's Harbour	Cancelled by CA54PTMA	
CA576387	Quidi Vidi	Cancelled by CA54PTNA	



**\*504/25 Transport Canada - Ship Safety Bulletins #05, #06 and #07/2025**

New **Ship Safety Bulletins** have recently been posted on the [Transport Canada website](#).

To view or download these bulletins, please click on the links below:

[SSB#05/2025](#) – Reporting requirements for the Canadian Carbon Intensity Indicator

[SSB#06/2025](#) – The Marine Safety Management System Regulations First Anniversary  
RDIMS# 20912480

[SSB#07/2025](#) – Pilot project on the inspection periodicity for small certificated domestic vessels  
RDIMS# 20773110

Sign up for [e-Bulletin](#) to receive an e-mail notice each time a new Ship Safety Bulletin is published on our website.

Contact us at [marinesafety-securitemaritime@tc.gc.ca](mailto:marinesafety-securitemaritime@tc.gc.ca) or 1-855-859-3123 (Toll Free).

**\*505/25 Canadian Coast Guard Publication - Amendments to the *Notices to Mariners Annual Edition 2025* - Section A, Notice 5: General Guidelines for Aquatic Species at Risk and Important Marine Mammal Areas**

Several amendments have been made throughout Notice 5, General Guidelines for Aquatic Species at Risk and Important Marine Mammal Areas.

The latest version of this notice is available on the [Notices to Mariners website](#).

**\*507/25 Donnacona à/to Batisca – Fixed Aids to Navigation Permanently Discontinued**

Reference chart: 1314

The following fixed aids to navigation have been permanently discontinued:

Aid Name	LL #	Position
Deschaillons Breakwater	11114	46° 33' 39.9"N 072° 06' 25.5"W
Deschaillons Breakwater	11115	46° 33' 39.8"N 072° 06' 23.4"W

(Q2025-039, 040)

**\*508/25 Kingston Harbour and Approaches/et les approches – Unlit Buoy Permanently Changed**

Reference chart: 2017

The following unlit buoy has been permanently changed:

Aid Name	LL #	Position	Changes
Buoy KA4	7386	44° 12' 06.3"N 076° 26' 54.2"W	Repositioned. Buoy designator changed from KA2 to KA4.

(B2025-018)



**\*509/25 Country Island to / à Barren Island – Unlit Buoy Repositioned**

Reference chart: 4234

The following unlit buoy has been repositioned to the following coordinates:

Aid Name	LL #	Position
Liscomb Harbour buoy VP22	5614.06	45° 00' 09.5"N 062° 04' 28.1"W

(F2025-009)

## Section 1A: Temporary and Preliminary Notices

### Reminder – Comment Period for Active Preliminary Notices

This is a reminder that the comment period is still open for the following active Preliminary notices:

Notice #	Reference Chart #	Aids Affected (LL #)	Intent of Notice
<b>Atlantic Coast</b>			
<a href="#">312(P)/25</a>	4116	List	Notice of Proposed Changes
<a href="#">415(P)/25</a>	4374	745, 746	Notice of Proposed Changes
<a href="#">416(P)/25</a>	4464	860.5	Light Buoy to be Discontinued
<a href="#">417(P)/25</a>	1234	1827	Aid to Navigation to be Abandoned
<b>Inland Waters</b>			
<a href="#">424(P)/25</a>	5510	6447.24	Racon to be Discontinued

Please refer to the [Notices to Mariners - Monthly Summary of Temporary and Preliminary Notices](#) publication for details.

## Newfoundland and Labrador Coast

### Temporary Notices

#### \*510(T)/25 Head of / Fond de Placentia Bay – Obstruction: Subsurface Moorings

Reference chart: 4839

Inshore subsurface moorings installed in the following coordinates:

47° 44.270'N 54° 10.840'W  
47° 45.350'N 54° 09.730'W  
47° 44.640'N 54° 07.580'W  
47° 43.400'N 54° 08.430'W

Each mooring is marked with a yellow surface buoy with a yellow light flashing every 4 seconds.

(NW-N-0258-25)

#### \*511/25 Cape St Mary's to / à Argentinia – Marine Works – Dredging Operations Completed

Reference: Notice 309(T)/25 is cancelled (Chart 4841).

Dredging operations taking place in Placentia Bay are now completed.

### Preliminary Notices

No notices applicable for this edition.

## Atlantic Coast

### Temporary Notices

#### **\*512(T)/25 Baie des Sept-Îles – Marine Works: Wharf Construction**

Reference chart: 1220

Construction operations taking place daily on the Mgr-Blanche Dock. Barges, cranes and work boats on site.

Minimum wake and wide berth of 300 metres requested.

(NW-C-0623-25)

#### **\*513(T)/25 Port de Québec – Marine Works: Wharf Construction**

Reference chart: 1316

Wharf construction operations taking place in the vicinity of 46° 49.872'N 071° 09.994'W.

Minimum wake requested.

(NW-C-1155-25)

#### **\*514/25 Havre de Gaspé – Aquaculture Sites Charted**

Reference: Notice 316(T)/23 is cancelled (Chart 4416).

The aquaculture sites have been charted on chart 4416.

### Preliminary Notices

No notices applicable for this edition.

## Inland Waters

### Temporary Notices

#### **\*515(T)/25 Croil Islands to/à Cardinal – Obstruction: Submerged Object**

Reference chart: 1434

Lost anchor reported in the vicinity of 44° 56.391'N 075° 02.670'W.

(NW-C-0892-25)

**\*516(T)/25 Lake Ontario/Lac Ontario (Western Portion/Partie Ouest) – Marine Works:  
Pipeline Installation**

Reference chart: 2077

Pipeline installation taking place daily until November 2025 during daylight hours south of RC Harris Water Treatment Plant. Barges and workboats on scene marked and lit at night.

(NW-C-0721-25)

**Preliminary Notices**

**Central Region**

Comment Submission

Comments on proposed changes in preliminary (P) notices are solicited from mariners and other interested parties within three months of the initial publication date. Following this date, the notices will be cancelled. Any objections raised must state the facts on which they are based and should include supporting information on safety, commerce and public benefit.

Comments should be directed to the following:

Superintendent  
Aids to Navigation & Waterways  
Canadian Coast Guard, Central Region  
1550 D'Estimauville Avenue  
Québec, QC G1J 5E9  
Telephone: (418) 648-7450  
Emails:  
St. Lawrence Region: [DFO.AtoNStLawrence-StLaurentAalaN.MPO@dfo-mpo.gc.ca](mailto:DFO.AtoNStLawrence-StLaurentAalaN.MPO@dfo-mpo.gc.ca)  
Great Lakes Region:  
[DFO.CCGCentralAtoNGreatLakes-GrandsLacsAalaNCentreGCC.MPO@dfo-mpo.gc.ca](mailto:DFO.CCGCentralAtoNGreatLakes-GrandsLacsAalaNCentreGCC.MPO@dfo-mpo.gc.ca)

**\*517(P)/25 Lac Saint-Louis – Range Lights to be Abandoned**

Reference chart: 1430

The Canadian Coast Guard proposes to permanently abandon the following aids to navigation:

Aid Name	LL #	Position
Lachine front range	1194	45° 25' 56.1"N 073° 41' 41.7"W
Lachine rear range	1195	45° 25' 59.3"N 073° 41' 31.1"W

The structures will remain in place.

Initial publication date: Friday, May 30, 2025

[Comment submission deadline](#): Thursday, August 28, 2025

(Q2025-044)

## Other (T) & (P) Notices

### Preliminary Notices

#### **\*519(P)/25 Scott Islands – Paper Chart to be Discontinued**

Reference chart: 3625

The Canadian Hydrographic Service proposes to permanently discontinue paper chart 3625 called Scott Islands.

Mariners and other interested parties are invited to comment on this action until August 31, 2025.

Comments should be directed to the [Canadian Hydrographic Service email address](#).

Any objections raised must state the facts on which they are based and should include supporting information on safety, commerce and public benefit.

## Section 2: Chart Corrections

### 1230 - Mont-Louis - New Edition - 19-FEB-2010 - NAD 1983

09-MAY-2025

LNMD. 03-JAN-2025

Delete depth of 1,7 metres  
(See Chart 1, I10) 49°14'03.6"N 065°44'15.8"W

*DFO(6411241-01)*

Add depth of 1,3 metres  
(See Chart 1, I10) 49°14'03.8"N 065°44'16.3"W

*DFO(6411241-02)*

### 1313 - Batiscan au/to Lac Saint-Pierre - New Edition - 08-MAR-2019 - NAD 1983

09-MAY-2025

LNMD. 22-NOV-2024

Amend vertical clearance of 4.2 metres, to read 2.3 metres  
(See Chart 1, D22) 46°27'08.3"N 072°17'02.1"W

*DFO(6411277-01)*

### 1439 - Carleton Island to/au Charity Shoal - New Edition - 30-SEP-2020 - World Geodetic System 1984

09-MAY-2025

LNMD. 24-MAY-2024

Delete anchoring prohibited area  
(See Chart 1, N21.1) between 44°12'09.2"N 076°32'47.0"W  
and 44°12'30.2"N 076°32'54.9"W  
This notice affects Electronic Navigational Chart: CA473276

*DFO(6605487-01)*

Add anchoring prohibited area joining 44°12'09.2"N 076°32'47.0"W  
44°12'13.6"N 076°32'44.5"W  
44°12'16.8"N 076°32'44.9"W  
44°12'27.6"N 076°32'37.1"W  
and 44°12'34.2"N 076°32'47.7"W

*DFO(6605487-02)*

### 2017 - Kingston Harbour and Approaches/et les approches - New Edition - 15-JUL-2020 - World Geodetic System 1984

09-MAY-2025

LNMD. 21-FEB-2025

Delete anchoring prohibited area  
(See Chart 1, N21.1) between 44°12'09.2"N 076°32'47.0"W  
and 44°12'30.2"N 076°32'54.9"W  
This notice affects Electronic Navigational Chart: CA473276

*DFO(6605487-01)*

Add anchoring prohibited area joining 44°12'09.2"N 076°32'47.0"W  
44°12'13.6"N 076°32'44.5"W  
44°12'16.8"N 076°32'44.9"W  
44°12'27.6"N 076°32'37.1"W  
and 44°12'34.2"N 076°32'47.7"W

*DFO(6605487-02)*

### 2020 - Belleville to/à Presqu'île Bay - New Chart - 02-JUL-2021 - World Geodetic System 1984

23-MAY-2025

Delete light, marked F R 21m  
(See Chart 1, P1) 44°01'18.1"N 077°43'48.6"W  
This notice affects Electronic Navigational Chart: CA373234, CA473495

*(B2025009) LL(488) DFO(6605488-01)*

**2021 - Murray Canal Presqu'île Bay to/à Trenton - Sheet/Feuille 1 - New Edition - 02-FEB-2007 - NAD 1983**

23-MAY-2025

LNMD. 01-SEP-2023

Delete light, marked FR 69ft  
(See Chart 1, P1)  
This notice affects Electronic Navigational Chart: CA373234, CA473495  
(B2025009) LL(488) DFO(6605488-01)

**2059 - Scotch Bonnet Island to/à Cobourg - New Chart - 31-JUL-1998 - NAD 1983**

23-MAY-2025

LNMD. 15-SEP-2023

Delete light, marked FR 21m  
(See Chart 1, P1)  
This notice affects Electronic Navigational Chart: CA373234, CA473495  
(B2025009) LL(488) DFO(6605488-01)

**4013 - Halifax to / à Sydney - New Edition - 06-SEP-2002 - NAD 1983**

23-MAY-2025

LNMD. 25-APR-2025

Delete fog signal 'Fog Sig' against light  
(See Chart 1, R1)  
(G2025025) LL(765.4) DFO(6311934-01)

**4015 - Sydney to / à Saint-Pierre - New Edition - 28-MAR-2003 - NAD 1983**

23-MAY-2025

LNMD. 29-NOV-2024

Delete fog signal 'Fog Sig' against light  
(See Chart 1, R1)  
(G2025025) LL(765.4) DFO(6311934-01)

**4021 - Pointe Amour à / to Cape Whittle et / and Cape George - New Edition - 01-NOV-2002 - NAD 1983**

30-MAY-2025

LNMD. 07-MAR-2025

Amend FI 15s 108ft 17M to read FI 5s120ft11M against light  
(See Chart 1, P16)  
(N2025016) LL(208) DFO(6311930-01)

**4022 - Cabot Strait and approaches / Détroit de Cabot et les approches - New Edition - 17-JAN-2003 - NAD 1983**

23-MAY-2025

LNMD. 29-NOV-2024

Delete fog signal 'Fog Sig' against light  
(See Chart 1, R1)  
(G2025025) LL(765.4) DFO(6311934-01)

**4026 - Havre Saint-Pierre et/and Cap des Rosiers à/to Pointe des Monts - New Edition - 23-MAY-2014 - NAD 1983**

30-MAY-2025

LNMD. 28-FEB-2025

Add rock which covers and uncovers with drying height of 0,4 metres, Rep  
(2024)  
(See Chart 1, K11, I3.2)  
DFO(6411275-01)

**4116 - Approaches to / Approches à Saint John - New Edition - 31-AUG-2007 - NAD 1983**

02-MAY-2025

LNMD. 29-NOV-2024

Add legend, Ru  
(See Chart 1, F33)  
DFO(6311936-01)

**4141 - Saint John to / à Grand Bay including / y compris Kennebecasis River - Sheet / Feuille A-B - New Edition - 30-OCT-2009 - NAD 1983**

02-MAY-2025

LNMD/D. 14-JUN-2024

Add legend, Ru  
(See Chart 1, F33)

45°16'13.9"N 066°08'12.6"W

*DFO(6311936-01)*

Add legend, Ru  
(See Chart 1, F33)

45°16'10.1"N 066°07'59.1"W

*DFO(6311936-02)*

**4201 - Halifax Harbour: Bedford Basin - New Edition - 25-AUG-2017 - NAD 1983**

16-MAY-2025

LNMD/D. 26-APR-2024

Add wreck, least depth unknown, with legend Rep (2025)  
(See Chart 1, K28, I3.2)

44°42'47.4"N 063°40'21.1"W

*DFO(6311956-01)*

**4209 - Shelburne Harbour - New Edition - 30-DEC-2011 - NAD 1983**

23-MAY-2025

LNMD/D. 09-JUN-2023

Add light Fl R  
(See Chart 1, P1)

43°40'43.9"N 065°18'07.1"W

*(F2025006) LL(360.8) DFO(6311953-01)*

**4278 - MacIvers Pt to / à Little Narrows - New Edition - 26-AUG-2016 - NAD 1983**

09-MAY-2025

LNMD/D. 04-APR-2025

Reposition green port hand lighted spar buoy Q G, marked A27  
(See Chart 1, Qc)

from 45°59'49.3"N 060°58'51.8"W  
to 45°59'50.3"N 060°58'50.4"W  
*(G2025001) LL(829.1) DFO(6311908-01)*

**4302 - Canso Lock and Causeway / Écluse et Chaussée Surélevée de Canso - New Chart - 28-SEP-2012 - NAD 1983**

09-MAY-2025

LNMD/D. 28-FEB-2025

Replace depth of 3.6 metres with depth of 2.3 metres  
(See Chart 1, I10)

45°38'48.2"N 061°24'45.2"W

*DFO(6311941-01)*

**4375 - Guyon Island to / à Flint Island - New Edition - 11-OCT-2002 - NAD 1983**

23-MAY-2025

LNMD/D. 13-SEP-2024

Delete fog signal 'Fog Sig 30 s' against light  
(See Chart 1, R1)

46°00'24.9"N 059°49'21.2"W

*(G2025025) LL(765.4) DFO(6311934-01)*

**4377 - Main-à-Dieu Passage - New Edition - 06-NOV-1998 - NAD 1983**

23-MAY-2025

LNMD/D. 30-OCT-2020

Delete fog signal 'Fog Sig 30 s' against light  
(See Chart 1, R1)

46°00'25.4"N 059°49'21.6"W

*(G2025025) LL(765.4) DFO(6311934-01)*

**4455 - Baie Washtawouka à/to Baie Piashti - New Edition - 26-MAY-2023 - NAD 1983**

02-MAY-2025

Delete rear range/leading light F G 18m16M with leading line on a bearing of  
150 1/2° and a reciprocal 330 1/2°  
(See Chart 1, P20.2, Pa)

50°13'19.2"N 062°05'12.3"W

*(Q2024191) LL(1581) DFO(6411190-01)*



Delete	front range/leading light F G 11m16M (See Chart 1, P20.2)	50°13'05.8"N 062°05'00.4"W  (Q2025001) LL(1580) DFO(6411190-02)
--------	--	---

**4459 - Summerside Harbour - New Edition - 29-MAY-2020 - NAD 1983**  
09-MAY-2025

		LNMD. 17-MAY-2024
Add	depth of 6.4 metres (See Chart 1, I10)	46°22'52.6"N 063°48'56.0"W  DFO(6311428-01)
Add	depth of 6.6 metres (See Chart 1, I10)	46°23'08.3"N 063°47'43.7"W  DFO(6311428-02)
Add	depth of 6.6 metres (See Chart 1, I10)	46°23'11.3"N 063°47'40.1"W  DFO(6311428-03)
Replace	depth of 6.6 metres with depth of 6.5 metres (See Chart 1, I10)	46°23'12.2"N 063°47'30.5"W  DFO(6311428-05)
Replace	depth of 6.3 metres with depth of 5.9 metres (See Chart 1, I10)	46°23'13.7"N 063°47'31.0"W  DFO(6311428-06)
Replace	depth of 6.7 metres with depth of 5.9 metres (See Chart 1, I10)	46°23'13.9"N 063°47'29.9"W  DFO(6311428-08)
Replace	depth of 6.6 metres with depth of 6.3 metres (See Chart 1, I10)	46°23'12.9"N 063°47'28.0"W  DFO(6311428-10)
Replace	depth of 6.6 metres with depth of 6.3 metres (See Chart 1, I10)	46°23'14.3"N 063°47'27.6"W  DFO(6311428-12)
Replace	depth of 6.4 metres with depth of 6.3 metres (See Chart 1, I10)	46°23'14.0"N 063°47'26.2"W  DFO(6311428-14)
Delete	depth of 8.5 metres (See Chart 1, I10)	46°23'14.3"N 063°47'24.7"W  DFO(6311428-15)
Delete	depth of 8.4 metres (See Chart 1, I10)	46°23'14.0"N 063°47'22.9"W  DFO(6311428-16)
Delete	depth of 8.3 metres (See Chart 1, I10)	46°23'16.3"N 063°47'23.2"W  DFO(6311428-17)
Delete	depth of 1.6 metres (See Chart 1, I10)	46°23'20.1"N 063°47'21.7"W  DFO(6311428-18)

Add	depth of 0.7 metres (See Chart 1, I10)	46°23'20.7"N 063°47'22.8"W <i>DFO(6311428-19)</i>
Replace	depth of 5.4 metres with depth of 5.1 metres (See Chart 1, I10)	46°23'17.7"N 063°47'17.5"W <i>DFO(6311428-20)</i>
Replace	depth of 6.6 metres with depth of 6.3 metres (See Chart 1, I10)	46°23'16.3"N 063°47'17.2"W <i>DFO(6311428-21)</i>
Replace	depth of 6.4 metres with depth of 6 metres (See Chart 1, I10)	46°23'14.5"N 063°47'18.6"W <i>DFO(6311428-22)</i>
Delete	depth of 6.3 metres (See Chart 1, I10)	46°23'07.8"N 063°47'11.1"W <i>DFO(6311428-23)</i>
Amend	6,4m (2010) to read 6,6m (2024) (See Chart 1, I22)	46°23'07.7"N 063°47'28.6"W <i>DFO(6311428-24)</i>
Amend	7,3m (2011) to read 7,5m (2024) (See Chart 1, I22)	46°23'12.7"N 063°47'24.6"W <i>DFO(6311428-25)</i>

**4523 - Little Bay Arm and Approaches / et les approches - New Edition - 20-DEC-2002 - NAD 1983**

02-MAY-2025

LN/D. 04-APR-2025

Delete	ferry route (See Chart 1, M50)	joining 49°35'26.2"N 055°56'06.6"W 49°35'26.6"N 055°55'56.3"W 49°36'11.9"N 055°54'33.9"W and 49°37'15.5"N 055°52'15.7"W <i>DFO(6311938-01)</i>
Delete	legend Ferry Terminal against wharf (See Chart 1, F50)	49°35'26.2"N 055°56'11.4"W <i>DFO(6311938-02)</i>

**4523 - Otter Island Narrows - New Edition - 20-DEC-2002 - NAD 1983**

02-MAY-2025

LN/D. 04-APR-2025

Delete	ferry route (See Chart 1, M50)	joining 49°36'06.3"N 055°54'44.0"W 49°36'11.5"N 055°54'34.9"W and 49°36'23.8"N 055°54'08.1"W <i>DFO(6311938-01)</i>
--------	-----------------------------------	--

**4530 - Carmanville - New Edition - 15-MAR-2002 - NAD 1983**

02-MAY-2025

LN/D. 07-MAR-2025

Delete	front range/leading light F R 8m (See Chart 1, P20.2)	49°23'31.4"N 054°17'08.8"W <i>(N2025009) LL(392) DFO(6311918-01)</i>
Add	sector light F RWG 8m2M Visible through an arc of 5°, red from 201° to 202°, alternating red and white from 202° to 202.5°, white from 202.5° to 204.5°, alternating green and white from 204.5° to 205° and green from 205° to 206° (See Chart 1, P30.3, P16)	49°23'31.4"N 054°17'08.8"W <i>DFO(6311918-02)</i>

Delete rear range/leading light F R 14m with leading line and bearings  $023\frac{1}{2}^{\circ}$  between  $49^{\circ}23'19.4''\text{N}$   $054^{\circ}17'16.8''\text{W}$   
-  $203\frac{1}{2}^{\circ}$  and  $49^{\circ}25'25.7''\text{N}$   $054^{\circ}15'52.6''\text{W}$   
(See Chart 1, P20.2, Pa)  
(N2025010) LL(393) DFO(6311919-01)

**4530 - Hamilton Sound: Eastern Portion / Partie-est - New Edition - 15-MAR-2002 - NAD 1983**

02-MAY-2025

LNMD. 07-MAR-2025

Delete front range/leading light F R 8m  $49^{\circ}23'31.4''\text{N}$   $054^{\circ}17'08.8''\text{W}$   
(See Chart 1, P20.2)  
(N2025009) LL(392) DFO(6311918-01)

Add sector light F RWG 8m2M Visible through an arc of  $5^{\circ}$ , red from  $201^{\circ}$  to  $202^{\circ}$ , alternating red and white from  $202^{\circ}$  to  $202.5^{\circ}$ , white from  $202.5^{\circ}$  to  $204.5^{\circ}$ , alternating green and white from  $204.5^{\circ}$  to  $205^{\circ}$  and green from  $205^{\circ}$  to  $206^{\circ}$   $49^{\circ}23'31.4''\text{N}$   $054^{\circ}17'08.8''\text{W}$   
(See Chart 1, P30.3, P16)  
DFO(6311918-02)

Delete rear range/leading light F R 14m with leading line and bearings  $023\frac{1}{2}^{\circ}$  between  $49^{\circ}23'19.4''\text{N}$   $054^{\circ}17'16.8''\text{W}$   
-  $203\frac{1}{2}^{\circ}$  and  $49^{\circ}26'17.2''\text{N}$   $054^{\circ}15'18.4''\text{W}$   
(See Chart 1, P20.2, Pa)  
(N2025010) LL(393) DFO(6311919-01)

**4585 - Green Head to / à Little Bay Island - New Edition - 30-MAY-2003 - NAD 1983**

02-MAY-2025

LNMD. 04-APR-2025

Delete ferry route joining  $49^{\circ}35'26.4''\text{N}$   $055^{\circ}55'56.3''\text{W}$   
(See Chart 1, M50)  $49^{\circ}36'13.7''\text{N}$   $055^{\circ}54'31.2''\text{W}$   
 $49^{\circ}37'23.5''\text{N}$   $055^{\circ}51'57.8''\text{W}$   
 $49^{\circ}37'41.6''\text{N}$   $055^{\circ}49'29.3''\text{W}$   
and  $49^{\circ}37'54.8''\text{N}$   $055^{\circ}48'32.8''\text{W}$   
DFO(6311938-01)

Delete legend Ferry Terminal against wharf  $49^{\circ}35'26.2''\text{N}$   $055^{\circ}56'26.3''\text{W}$   
(See Chart 1, F50)  
DFO(6311938-02)

**4587 - Cow Head Wharves / Quais - New Edition - 25-JAN-2008 - NAD 1983**

16-MAY-2025

LNMD. 28-APR-2023

Add obstruction, depth unknown, with legend PA Rep (2024)  $47^{\circ}11'48.3''\text{N}$   $055^{\circ}05'58.3''\text{W}$   
(See Chart 1, K40, B7, I3.2)  
DFO(6311954-01)

**4592 - Little Bay Island to / à League Rock - New Edition - 10-OCT-2003 - NAD 1983**

02-MAY-2025

LNMD. 28-OCT-2022

Delete ferry route joining  $49^{\circ}35'19.6''\text{N}$   $055^{\circ}50'02.3''\text{W}$   
(See Chart 1, M50)  $49^{\circ}35'22.8''\text{N}$   $055^{\circ}49'37.0''\text{W}$   
 $49^{\circ}35'31.7''\text{N}$   $055^{\circ}48'58.7''\text{W}$   
 $49^{\circ}32'59.2''\text{N}$   $055^{\circ}46'48.7''\text{W}$   
 $49^{\circ}32'55.9''\text{N}$   $055^{\circ}46'22.1''\text{W}$   
and  $49^{\circ}32'48.2''\text{N}$   $055^{\circ}46'14.5''\text{W}$   
DFO(6311938-01)

**4663 - Cow Head to / à Pointe Riche - New Edition - 01-AUG-2003 - NAD 1983**

30-MAY-2025

LN/D. 22-NOV-2024

Amend FI 15s 108ft 17M to read FI 5s120ft11M against light  
(See Chart 1, P16)

50°38'02.8"N 057°19'18.1"W

(N2025016) LL(208) DFO(6311930-01)

**4667 - Savage Cove to / à St Barbe Bay - New Edition - 30-MAR-2007 - NAD 1983**

23-MAY-2025

LN/D. 04-MAR-2022

Reposition front range/leading light F G 9m12M  
(See Chart 1, P20.2)

from 51°12'30.0"N 056°46'03.0"W  
to 51°12'40.3"N 056°46'01.0"W  
(N2025018) LL(215.8) DFO(6311944-01)

Reposition rear range/leading light F G 13m12M  
(See Chart 1, P20.2)

from 51°12'28.8"N 056°45'56.0"W  
to 51°12'39.2"N 056°45'50.0"W  
(N2025019) LL(215.9) DFO(6311944-02)

Amend bearing 105°/285° to read 100°/280°  
(See Chart 1, M1)

51°12'49.4"N 056°47'56.2"W

DFO(6311944-03)

**4667 - St. Barbe Wharf and Approaches / Quai et Approches - New Edition - 30-MAR-2007 - NAD 1983**

23-MAY-2025

LN/D. 04-MAR-2022

Reposition front range/leading light F G 9m  
(See Chart 1, P20.2)

from 51°12'30.0"N 056°46'03.0"W  
to 51°12'40.3"N 056°46'01.0"W  
(N2025018) LL(215.8) DFO(6311944-01)

Reposition rear range/leading light F G 13m  
(See Chart 1, P20.2)

from 51°12'28.8"N 056°45'56.0"W  
to 51°12'39.2"N 056°45'50.0"W  
(N2025019) LL(215.9) DFO(6311944-02)

Amend bearing 105°/285° to read 100°/280°  
(See Chart 1, M1)

51°12'35.3"N 056°46'34.0"W

DFO(6311944-03)

**4679 - Hawkes Bay, Port Saunders, Back Arm - New Edition - 29-NOV-2002 - NAD 1983**

30-MAY-2025

LN/D. 22-NOV-2024

Amend FI 15s 108ft 17M to read FI 5s120ft11M against light  
(See Chart 1, P16)

50°37'58.9"N 057°19'20.2"W

(N2025016) LL(208) DFO(6311930-01)

**4680 - Hawkes Bay to / à Ste Geneviève Bay including / y compris St. John Bay - New Edition - 07-NOV-2003 - NAD 1983**

30-MAY-2025

LN/D. 22-NOV-2024

Amend FI 15s 108ft 8M to read FI 5s120ft11M against light  
(See Chart 1, P16)

50°38'00.6"N 057°19'20.5"W

(N2025016) LL(208) DFO(6311930-01)

**4821 - White Bay and / et Notre Dame Bay - New Chart - 23-APR-2004 - NAD 1983**

02-MAY-2025

LN/D. 23-AUG-2024

Delete ferry route  
(See Chart 1, M50)

joining 49°33'41.0"N 055°44'20.9"W  
49°33'51.6"N 055°44'28.5"W  
49°33'56.8"N 055°45'12.5"W  
49°37'51.1"N 055°48'36.4"W  
49°37'33.9"N 055°51'25.0"W  
49°36'21.8"N 055°54'14.2"W  
and 49°35'18.0"N 055°56'07.7"W  
DFO(6311938-01)

**4823 - Burnt Island - New Chart - 16-JAN-2004 - NAD 1983**

16-MAY-2025

LNMD. 13-DEC-2024

Replace depth of 2.5 metres with depth of 2 metres  
(See Chart 1, I10)

47°35'45.6"N 058°53'14.2"W

*DFO(6311949-01)*

**4832 - Grand Bank Harbour - New Chart - 02-OCT-1987 - NAD 1983**

09-MAY-2025

LNMD. 22-NOV-2024

Add depth of 4.5 metres  
(See Chart 1, I10)

47°06'01.9"N 055°45'04.1"W

*DFO(6311939-01)*

Replace depth of 4.5 metres with depth of 3.5 metres  
(See Chart 1, I10)

47°06'01.6"N 055°45'04.5"W

*DFO(6311939-02)*

Add depth of 4.8 metres  
(See Chart 1, I10)

47°06'01.2"N 055°45'04.3"W

*DFO(6311939-03)*

**4847 - Conception Bay - New Edition - 03-AUG-2001 - NAD 1983**

09-MAY-2025

LNMD. 28-FEB-2025

Add light Fl G  
(See Chart 1, P1)

47°35'25.4"N 053°12'03.3"W

*(N2025008) LL(486.05) DFO(6311926-01)*

**4862 - Carmanville to / à Bacalhoa Island and / et Fogo - New Chart - 26-DEC-2003 - NAD 1983**

02-MAY-2025

LNMD. 16-AUG-2024

Delete front range/leading light FR 8m  
(See Chart 1, P20.2)

49°23'31.4"N 054°17'08.8"W

*(N2025009) LL(392) DFO(6311918-01)*

Add sector light F RWG 8m2M Visible through an arc of 5°, red from 201° to 202°, alternating red and white from 202° to 202.5°, white from 202.5° to 204.5°, alternating green and white from 204.5° to 205° and green from 205° to 206°  
(See Chart 1, P30.3, P16)

49°23'31.4"N 054°17'08.8"W

*DFO(6311918-02)*

Delete rear range/leading light FR 14m with leading line and bearings 023½° - 203½° between 49°23'19.4"N 054°17'16.8"W and 49°26'16.0"N 054°15'19.1"W  
(See Chart 1, P20.2, Pa)

*(N2025010) LL(393) DFO(6311919-01)*

**4913 - Caraquet Harbour, Baie de Shippegan and / et Miscou Harbour - New Chart - 07-AUG-1992 - NAD 1983**

02-MAY-2025

LNMD. 14-FEB-2025

Delete red starboard hand lighted pillar buoy QR, marked EG18  
(See Chart 1, Qb, Q23)

47°46'48.2"N 064°43'36.6"W

*(G2025006) LL(1286.8) DFO(6311922-01)*

Add red starboard hand lighted spar buoy Q R, marked EG18  
(See Chart 1, Qb, Q24)

47°46'47.6"N 064°43'38.3"W

*(G2025006) LL(1286.8) DFO(6311922-02)*

Reposition red starboard hand lighted spar buoy FI R, marked EG14  
(See Chart 1, Qb)

from 47°48'50.0"N 064°43'27.2"W  
to 47°48'53.9"N 064°43'27.3"W  
*(G2025008) LL(1286) DFO(6311923-01)*

Replace	red starboard hand lighted pillar buoy FIR, marked EG24 with red starboard hand lighted spar buoy FI R, marked EG24 (See Chart 1, Qb, Q24)	47°45'34.2"N 064°42'43.6"W  LL(1290) DFO(6311933-01)
Replace	green port hand lighted pillar buoy QG, marked EJ3 with green port hand lighted spar buoy Q G, marked EJ3 (See Chart 1, Qc, Q24)	47°46'44.2"N 064°42'16.6"W  LL(1293) DFO(6311933-02)
Replace	green port hand lighted pillar buoy FIG, marked EG17 with green port hand lighted spar buoy FI G, marked EG17 (See Chart 1, Qc, Q24)	47°47'03.2"N 064°43'17.6"W  LL(1286.6) DFO(6311933-03)
Replace	red starboard hand lighted pillar buoy QR, marked EG8 with red starboard hand lighted spar buoy Q R, marked EG8 (See Chart 1, Qb, Q24)	47°50'41.0"N 064°43'42.9"W  LL(1282.5) DFO(6311933-04)
Replace	green port hand lighted pillar buoy FIG, marked EG5 with green port hand lighted spar buoy FI G, marked EG5 (See Chart 1, Qc, Q24)	47°51'11.4"N 064°43'57.7"W  LL(1282) DFO(6311933-05)
Replace	red starboard hand lighted pillar buoy QR, marked EA16 with red starboard hand lighted conical buoy FI R, marked EA16 (See Chart 1, Qb, Q20)	47°53'15.2"N 064°35'46.6"W  LL(1272) DFO(6311933-06)
Replace	green port hand lighted pillar buoy QG, marked EG11 with green port hand lighted spar buoy Q G, marked EG11 (See Chart 1, Qc, Q24)	47°49'54.2"N 064°43'50.6"W  LL(1284) DFO(6311933-07)
Replace	red starboard hand lighted pillar buoy QR, marked EM2 with red starboard hand lighted spar buoy Q R, marked EM2 (See Chart 1, Qb, Q24)	47°52'03.0"N 064°45'12.0"W  LL(1306.3) DFO(6311933-08)

**4958 - Cap-aux-Meules et/and Havre-aux-Maisons - New Chart - 01-NOV-2024 - World Geodetic System 1984**  
16-MAY-2025

Delete	white and orange hazard can buoy (See Chart 1, Qo)	47°24'09.9"N 061°52'02.4"W  DFO(6411236-01)
Delete	white and orange hazard can buoy (See Chart 1, Qo)	47°24'27.0"N 061°49'49.2"W  DFO(6411236-02)

**5410 - Coral Harbour and Approaches/et les approches - New Edition - 07-JUN-2019 - World Geodetic System 1984**  
09-MAY-2025

Reposition	light and radar reflector, marked FI 5s20m7M (See Chart 1, P1) This notice affects Electronic Navigational Chart: CA473497	from 64°00'41.1"N 083°12'59.9"W to 64°00'40.1"N 083°12'58.7"W  (A2025011) LL(2545) DFO(6605458-01)
------------	--	---

**5450 - Hudson Strait/Détroit d'Hudson - New Edition - 08-JUL-2005 - Unknown**

09-MAY-2025

LNMD. 16-FEB-2024

Reposition light and radar reflector, marked FI 6s 68ft 8M from 62°42'12.5"N 074°38'53.0"W  
(See Chart 1, P1) to 62°41'49.6"N 074°36'05.7"W  
This notice affects Electronic Navigational Chart: CA173378  
(A2025020) LL(2556) DFO(6605466-01)

**5533 - Roes Welcome Sound (Chesterfield Inlet to/à Cape Munn) - New Edition - 27-MAY-2005 - Unknown**

02-MAY-2025

LNMD. 01-DEC-2023

Delete	depth of 14 fathoms (See Chart 1, I10)	65°58'12.6"N 085°56'09.7"W  DFO(6605455-03)
Add	depth of 10 fathoms 1 foot (See Chart 1, I10)	65°58'35.3"N 085°54'42.1"W  DFO(6605455-04)
Add	depth of 9 fathoms (See Chart 1, I10)	65°55'35.8"N 085°55'19.9"W  DFO(6605455-06)
Add	depth of 8 fathoms 5 feet (See Chart 1, I10)	65°55'14.2"N 085°58'19.0"W  DFO(6605455-07)
Delete	depth of 12 fathoms (See Chart 1, I10)	65°53'43.9"N 086°01'49.4"W  DFO(6605455-08)
Add	depth of 7 fathoms 3 feet (See Chart 1, I10)	65°53'16.5"N 086°00'32.9"W  DFO(6605455-10)
Add	depth of 10 fathoms 5 feet (See Chart 1, I10)	65°51'38.2"N 086°03'05.5"W  DFO(6605455-12)
Add	depth of 10 fathoms 2 feet (See Chart 1, I10)	65°03'44.5"N 086°41'58.5"W  DFO(6605455-13)

**6241 - Berens River to/à Nelson River - Sheet/Feuille 1 - New Edition - 27-MAY-2005 - Unknown**

09-MAY-2025

LNMD. 10-MAY-2024

Delete	green port hand lighted spar buoy FI G, marked CL3 (See Chart 1, Qc)	52°48'29.9"N 098°47'47.0"W  (P2025012) LL(1612.3) DFO(6605496-01)
Delete	red starboard hand lighted spar buoy FI R, marked CL4 (See Chart 1, Qb)	52°54'53.9"N 098°51'59.2"W  (P2025013) LL(1612.4) DFO(6605497-01)

**7010 - Davis Strait and/et Baffin Bay - New Edition - 12-JAN-1979 - Unknown**

02-MAY-2025

LNMD. 28-FEB-2025

Add	depth of 7 fathoms 3 feet (See Chart 1, I10)	63°12'22.1"N 051°13'13.8"W  DFO(6605486-01)
-----	---	---

Add	depth of 1 fathom 3 feet (See Chart 1, I10)	63°16'48.0"N 051°10'59.0"W <i>DFO(6605486-02)</i>
Add	depth of 4 fathoms (See Chart 1, I10)	63°19'27.3"N 051°06'14.8"W <i>DFO(6605486-03)</i>
Add	depth of 12 fathoms (See Chart 1, I10)	63°37'00.4"N 051°43'19.7"W <i>DFO(6605486-05)</i>
Add	depth of 16 fathoms (See Chart 1, I10)	63°31'17.2"N 051°37'32.5"W <i>DFO(6605486-06)</i>

**7011 - Hudson Strait/Détroit D'Hudson to/à Groenland - New Edition - 02-SEP-1983 - Unknown**  
02-MAY-2025

LNMD. 28-FEB-2025

Add	depth of 7 fathoms 3 feet (See Chart 1, I10)	63°12'22.1"N 051°13'13.8"W <i>DFO(6605486-01)</i>
Adds	depth of 1 fathom 3 feet (See Chart 1, I10)	63°16'48.0"N 051°10'59.0"W <i>DFO(6605486-02)</i>
Add	depth of 4 fathoms (See Chart 1, I10)	63°19'27.3"N 051°06'14.8"W <i>DFO(6605486-03)</i>
Delete	depth of 21 fathoms (See Chart 1, I10)	63°36'19.7"N 051°45'07.8"W <i>DFO(6605486-04)</i>
Add	depth of 12 fathoms (See Chart 1, I10)	63°37'00.4"N 051°43'19.7"W <i>DFO(6605486-05)</i>
Add	depth of 16 fathoms (See Chart 1, I10)	63°31'17.2"N 051°37'32.5"W <i>DFO(6605486-06)</i>

**7065 - Mill Island to/à Winter Island - New Edition - 29-MAY-2015 - Aerial Photography (uncontrolled)**  
02-MAY-2025

LNMD. 01-DEC-2023

Add	depth of 11 fathoms (See Chart 1, I10)	66°09'55.9"N 085°39'36.1"W <i>DFO(6605455-02)</i>
Delete	depth of 14 fathoms (See Chart 1, I10)	65°58'32.0"N 085°55'57.6"W <i>DFO(6605455-03)</i>
Add	depth of 10 fathoms 1 foot (See Chart 1, I10)	65°58'35.3"N 085°54'42.1"W <i>DFO(6605455-04)</i>
Delete	depth of 15 fathoms (See Chart 1, I10)	65°54'59.6"N 085°55'20.4"W <i>DFO(6605455-05)</i>



Add	depth of 9 fathoms (See Chart 1, I10)	65°55'35.8"N 085°55'19.9"W <i>DFO(6605455-06)</i>
Add	depth of 8 fathoms 5 feet (See Chart 1, I10)	65°55'14.2"N 085°58'19.0"W <i>DFO(6605455-07)</i>
Add	depth of 7 fathoms 3 feet (See Chart 1, I10)	65°53'16.5"N 086°00'32.9"W <i>DFO(6605455-10)</i>
Add	depth of 10 fathoms 5 feet (See Chart 1, I10)	65°51'38.2"N 086°03'05.5"W <i>DFO(6605455-12)</i>
Add	depth of 10 fathoms 2 feet (See Chart 1, I10)	65°03'44.5"N 086°41'58.5"W <i>DFO(6605455-13)</i>

**7405 - Repulse Bay and Approaches/ Et Les Approches - New Edition - 01-OCT-1982 - Aerial Photography**

**(uncontrolled)**  
02-MAY-2025

LNM/D. 30-DEC-2016

Delete	depth of 23 fathoms (See Chart 1, I10)	66°09'57.2"N 085°39'25.3"W <i>DFO(6605455-01)</i>
Add	depth of 11 fathoms (See Chart 1, I10)	66°09'55.9"N 085°39'36.1"W <i>DFO(6605455-02)</i>
Add	depth of 10 fathoms 1 foot (See Chart 1, I10)	65°58'35.3"N 085°54'42.1"W <i>DFO(6605455-04)</i>
Add	depth of 9 fathoms (See Chart 1, I10)	65°55'35.8"N 085°55'19.9"W <i>DFO(6605455-06)</i>
Add	depth of 8 fathoms 5 feet (See Chart 1, I10)	65°55'14.2"N 085°58'19.0"W <i>DFO(6605455-07)</i>
Delete	depth of 14 fathoms (See Chart 1, I10)	65°53'14.3"N 085°59'57.3"W <i>DFO(6605455-09)</i>
Add	depth of 7 fathoms 3 feet (See Chart 1, I10)	65°53'16.5"N 086°00'32.9"W <i>DFO(6605455-10)</i>
Delete	depth of 15 fathoms (See Chart 1, I10)	65°51'30.6"N 086°02'32.1"W <i>DFO(6605455-11)</i>
Add	depth of 10 fathoms 5 feet (See Chart 1, I10)	65°51'38.2"N 086°03'05.5"W <i>DFO(6605455-12)</i>

**7568 - Lancaster Sound and/et Admiralty Inlet - New Chart - 05-JUL-1985 - Unknown**

23-MAY-2025

LNMD. 23-AUG-2024

Delete obstruction with known depth of 1.1 metres 74°29'05.8"N 087°00'58.4"W  
(See Chart 1, K41)  
This notice affects Electronic Navigational Chart: CA273259

*DFO(6605500-01)*

Add rock which covers and uncovers with drying height of 0.2 metres 74°29'05.8"N 087°00'58.4"W  
(See Chart 1, K11)  
This notice affects Electronic Navigational Chart: CA273259

*DFO(6605500-02)*

**7661 - Demarcation Bay to/à Philips Bay - New Chart - 14-MAR-1986 - NAD 1927**

09-MAY-2025

LNMD. 27-SEP-2024

Delete buoy orange-white mooring spar buoy, Priv 69°34'00.4"N 139°14'53.4"W  
(A2025034) *DFO(6605491-01)*

**7685 - Tuktoyaktuk Harbour and Approaches/et les approches - New Edition - 13-OCT-2017 - World Geodetic System 1984**

23-MAY-2025

LNMD. 27-SEP-2019

Reposition green port hand lighted pillar buoy FI G, marked T15 from 69°28'01.9"N 133°00'59.9"W  
(See Chart 1, Qc) to 69°28'03.6"N 133°00'55.2"W  
This notice affects Electronic Navigational Chart: CA573407

*(A2025035) LL(2509) DFO(6605493-01)*

**7777 - Coronation Gulf Western Portion/Partie Ouest - New Edition - 15-MAY-2015 - World Geodetic System 1984**

02-MAY-2025

LNMD. 04-OCT-2024

Delete depth of 20.1 metres 67°51'15.7"N 113°50'14.6"W  
(See Chart 1, I10) *DFO(6605485-01)*

Add obstruction, depth unknown Rep (2025) 67°51'15.7"N 113°50'11.0"W  
(See Chart 1, K40) *DFO(6605485-02)*

Add obstruction, depth unknown Rep (2025) 67°59'44.9"N 112°31'43.2"W  
(See Chart 1, K40) *DFO(6605485-03)*

Add obstruction, depth unknown Rep (2025) 67°59'50.0"N 112°30'18.1"W  
(See Chart 1, K40) *DFO(6605485-04)*

Add obstruction, depth unknown Rep (2025) 68°00'26.8"N 112°27'05.6"W  
(See Chart 1, K40) *DFO(6605485-05)*

Add obstruction, depth unknown Rep (2025) 68°00'34.9"N 112°24'17.2"W  
(See Chart 1, K40) *DFO(6605485-06)*

Add obstruction, depth unknown Rep (2025) 68°00'43.1"N 112°28'05.8"W  
(See Chart 1, K40) *DFO(6605485-07)*

Add	obstruction, depth unknown Rep (2025) (See Chart 1, K40)	68°00'47.5"N 112°15'27.5"W  <i>DFO(6605485-08)</i>
-----	---	--

Add	obstruction, depth unknown Rep (2025) (See Chart 1, K40)	68°00'58.2"N 112°13'58.5"W  <i>DFO(6605485-09)</i>
-----	---	--

**8006 - Scotian Shelf / Plate-Forme Néo-Écossaise: Browns Bank to Emerald Bank / Banc de Brown au Banc D'Émeraude**  
**- New Edition - 14-FEB-2003 - NAD 1983**  
 16-MAY-2025

LNMD. 16-FEB-2024

Add	wreck Wk with known depth of 56 fathoms (See Chart 1, K26)	42°27'35.3"N 065°13'26.0"W  <i>DFO(6311955-01)</i>
-----	---	--

## Section 3: Radio Aids to Marine Navigation Corrections

### \*520/25 Radio Aids to Marine Navigation 2025 (Atlantic, St. Lawrence, Great Lakes, Lake Winnipeg, Arctic and Pacific)

**Page 2-8 to 2-10**

**AMEND AS FOLLOWS:**

**Table 2-4 - Iqaluit MCTS/VFF – Broadcasts**

Time UTC	Site	Frequency or Channel	Contents
01:10	Coral Harbour	2514J3E	Radiotelephony <ul style="list-style-type: none"> <li>• Technical marine synopsis and forecasts on request for marine forecast areas : 151, 152, 153, 154, 155, 156, 157, 158, 159, 160, 161, 162, 163, 164, 310, 311 and 312.</li> <li>• Navigational warnings “Series A” for all NORDREG waters bound by Shipping Safety Control Zones 8, 14 and 16, including Southern Hudson Bay, James Bay, Chesterfield Inlet and Baker Lake.</li> </ul>
	<del>Coral Harbour</del>	<del>6507J3E</del>	
01:15	Inuvik	6218.6J3E	Radiotelephony <ul style="list-style-type: none"> <li>• Technical marine synopsis and forecasts on request for marine forecast areas: 180, 190, 191, 192, 193, 194, 195, 112, and 113</li> <li>• Navigational warnings “Series A” for Great Slave Lake, Hay River, Mackenzie River and Mackenzie Delta bound by forecast areas 112 and 113.</li> </ul>
	Hay River	4363J3E	
	Parson’s Lake and Enterprise	Ch26	
	Yellowknife	Ch85	
02:35	Cambridge Bay	<del>4363J3E</del> 2558J3E	Radiotelephony <ul style="list-style-type: none"> <li>• Technical marine synopsis and weather on request for marine forecast areas: 111 to 122 inclusive.</li> <li>• Navigational warnings “Series A” for all NORDREG waters west of Taloyoak.</li> </ul>
	Inuvik	6218.6J3E	
03:00	Iqaluit	490F1B	NAVTEX: (S) French <ul style="list-style-type: none"> <li>• Weather for marine forecast areas 143, 144, 145, 147, 148, 149 and 150.</li> </ul>
03:10	Iqaluit	518F1B	NAVTEX: (T) English <ul style="list-style-type: none"> <li>• Weather for marine forecast areas 143, 144, 145, 147, 148, 149 and 150.</li> </ul>
03:30	Iqaluit	8416.5F1B	HF NBDP <ul style="list-style-type: none"> <li>• METAREA bulletins for METAREAS XVII and XVIII and the Northwestern part of METAREA IV within Canadian waters.</li> <li>• NAVAREA warnings for NAVAREAs XVII and XVIII.</li> </ul>
07:00	Iqaluit	490F1B	NAVTEX: (S) French <ul style="list-style-type: none"> <li>• Navigational warnings “Series A” for NORDREG waters bound by marine forecast areas 143, 144, 145, 147, 148, 149 and 150.</li> <li>• Ice hazard bulletin for marine forecast areas 143, 144, 145, 147, 148, 149, 150 and 229.</li> </ul>

Time UTC	Site	Frequency or Channel	Contents
07:10	Iqaluit	518F1B	NAVTEX: (T) English <ul style="list-style-type: none"> <li>• Navigational warnings for “Series A” for NORDREG waters bound by marine forecast areas 143, 144, 145, 147, 148, 149 and 150.</li> <li>• Ice hazard bulletin for marine forecast areas 143, 144, 145, 147, 148, 149, 150 and 229.</li> </ul>
11:00	Iqaluit	490F1B	NAVTEX: (S) French <ul style="list-style-type: none"> <li>• Weather for marine forecast areas 143, 144, 145, 147, 148, 149 and 150.</li> </ul>
11:10	Iqaluit	518F1B	NAVTEX: (T) English <ul style="list-style-type: none"> <li>• Weather for marine forecast areas 143, 144, 145, 147, 148, 149 and 150.</li> </ul>
12:40	Resolute	2582J3E	Radiotelephony <ul style="list-style-type: none"> <li>• Technical marine synopsis and forecasts on request for marine forecast areas 125 to 138.</li> <li>• Navigational warnings “A Series” for all NORDREG waters bound by Shipping Safety Control Zones 1, 2, 3, 5, 6, 9 and 13.</li> </ul>
	<del>Resolute</del>	<del>4363J3E</del>	
13:15	Inuvik	6218.6J3E	Radiotelephony <ul style="list-style-type: none"> <li>• Technical marine synopsis and weather forecasts on request for marine forecast areas 180, 190, 191, 192, 193, 194, 195, 112, 113.</li> <li>• Navigational warnings “Series A” for Great Slave Lake, Hay River, Mackenzie River and Mackenzie Delta bound by forecast areas 112 and 113.</li> </ul>
	Hay River	4363J3E	
	Parson’s Lake and Enterprise	Ch26	
	Yellowknife	Ch85	
13:20	Coral Harbour	2514J3E	Radiotelephony <ul style="list-style-type: none"> <li>• Technical marine synopsis and forecasts on request for marine forecast areas 151, 152, 153, 154, 155, 156, 157, 158, 159, 160, 161, 162, 163, 164, 310, 311 and 312.</li> <li>• Navigational warnings “A Series” for all NORDREG waters bound by Shipping Safety Control Zones 8, 14, 16 and including, Southern Hudson Bay, James Bay, Chesterfield Inlet and Baker Lake.</li> </ul>
14:10	Killiniq	2514J3E	Radiotelephony <ul style="list-style-type: none"> <li>• Technical marine synopsis and forecasts on request for marine forecast areas: 137 to 150, 228, 229 and 230.</li> <li>• Navigational warnings “A Series” and “N Series” for all NORDREG waters bound by Shipping Safety Control Zones 9, 10 and 15, including Ungava Bay and along the Labrador coast southward to 58N.</li> </ul>
	Iqaluit	2582J3E	
	<del>Iqaluit</del>	<del>4363J3E</del>	
14:35	Cambridge Bay	2558J3E	Radiotelephony <ul style="list-style-type: none"> <li>• Technical marine synopsis and forecasts for marine forecast areas 111 to 122 inclusive.</li> <li>• Navigational warnings “A Series” for all NORDREG waters west of Taloyoak.</li> </ul>
	Inuvik	6218.6J3E	
15:00	Iqaluit	490F1B	NAVTEX: (S) French <ul style="list-style-type: none"> <li>• Weather for marine forecast areas 143, 144, 145, 147, 148, 149 and 150.</li> </ul>
15:10	Iqaluit	518F1B	NAVTEX: (T) English <ul style="list-style-type: none"> <li>• Weather for marine forecast areas 143, 144, 145, 147, 148, 149 and 150.</li> </ul>

Time UTC	Site	Frequency or Channel	Contents
15:30	Iqaluit	8416.5F1B	HF NBDP <ul style="list-style-type: none"> <li>• METAREA bulletins for METAREAS XVII and XVIII and Northwestern part of METAREA IV within Canadian waters.</li> <li>• NAVAREA warnings for NAVAREAS XVII and XVIII.</li> </ul>
17:05	Cambridge Bay	<del>4363J3E</del> 2558J3E	Radiotelephony <ul style="list-style-type: none"> <li>• Ice boundary information and ice forecasts on request for marine forecast areas 111 to 125, 135 to 163, 228, 229, 230, 310, 311 and 312.</li> </ul>
	Inuvik	6218.6J3E	
	Coral Harbour / Killiniq	2514J3E	
	Iqaluit / Resolute	2582J3E	
19:00	Iqaluit	490F1B	NAVTEX: (S) French <ul style="list-style-type: none"> <li>• Navigational warnings “A Series” for NORDREG waters bound by marine forecast areas 143, 144, 145, 147, 148, 149 and 150.</li> <li>• Ice hazard bulletin for marine forecast areas 143, 144, 145, 147, 148, 149, 150 and 229.</li> </ul>
19:10	Iqaluit	518F1B	NAVTEX: (T) English <ul style="list-style-type: none"> <li>• Navigational warnings “A Series” for NORDREG waters bound by marine forecast areas 143, 144, 145, 147, 148, 149 and 150.</li> <li>• Ice hazard bulletin for marine forecast areas 143, 144, 145, 147, 148, 149, 150 and 229.</li> </ul>
22:35	Killiniq	2514J3E	Radiotelephony <ul style="list-style-type: none"> <li>• Technical marine synopsis and forecasts on request for marine forecast areas 137 to 150, 228, 229 and 230.</li> <li>• Navigational warnings “A Series” and “N Series” for all NORDREG waters bound by Shipping Safety Control Zones 9, 10 and 15, including Ungava Bay and along the Labrador coast southward to 58N.</li> </ul>

## Page 4-71

### AMEND AS FOLLOWS:

#### 4.3.6 Sailing Trip Plan Service

All small craft operators, including those making day trips, are encouraged to file a **Sailing Trip** Plan with a responsible person. This person should be instructed to call the Joint Rescue Coordination Centre (JRCC) or Maritime Rescue Sub-Centre (MRSC) if the vessel becomes overdue. The telephone numbers can be found in Section 4.3.7 of this publication at the front of most telephone books and should be included with the **Sailing Trip** Plan. In circumstances where it is not possible to file a **Sailing Trip** Plan with a responsible person, a **Sailing Trip** Plan may be filed by telephone, radio or in person, with any CCG MCTS Centre. While at sea, masters/operators who have filed a **sailing Trip** plan with an MCTS Centre are encouraged to file a daily position report during long trips. Upon your return, be sure to close (or deactivate) the **Sailing Trip** Plan you filed earlier. Forgetting to do so can result in an unwarranted search for you.

**Page 4-72**

**DELETE AS FOLLOWS:**

**4.3.7 Search and Rescue in Canadian Areas of Responsibility**

The Canadian Forces (CF) in co-operation with the Canadian Coast Guard has overall responsibility for coordination of federal aeronautical and maritime Search and Rescue (SAR) activities in Canada, including Canadian waters and the high seas off the coasts of Canada. The CF provides dedicated SAR aircraft in support to marine SAR incidents. The CCG coordinates maritime SAR activities within this area and provides dedicated maritime SAR vessels in strategic locations. Joint Rescue Coordination Centres (JRCC) are maintained at Victoria, B.C., Trenton, Ont. and Halifax, N.S. These centres are staffed 24 hours a day by Canadian Forces and CCG personnel. Each JRCC is responsible for an internationally agreed upon designated area known as a Search and Rescue Region (SRR). In addition, two Maritime Rescue Sub-Centres (MRSC), staffed by CCG personnel are maintained at Québec, QC and St. John's, NL to coordinate local marine SAR operations.

**Joint Rescue Coordination Centre (JRCC) / Maritime Rescue Sub-Centre (MRSC)**

**JRCC Halifax, NS**

Telephone: 1-800-565-1582	Maritimes Region
<del>1-800-563-2444</del>	<del>Newfoundland and Labrador Region</del>
902-427-8200	Satellite, Local or Out of Area
Facsimile: 902-427-2114	
Email: <a href="mailto:jrcchalifax@sarnet.dnd.ca">jrcchalifax@sarnet.dnd.ca</a>	

## Section 4: Canadian Sailing Directions Corrections

---

The following **Canadian Sailing Directions** volumes have recently been updated on the [Canadian Hydrographic Service website](#).

No.	Title
<b>Atlantic Coast</b>	
<b>ATL 104</b>	Cape North to Cape Canso (including Bras d'Or Lake)
<b>Pacific Coast</b>	
<b>PAC 201</b>	Juan de Fuca Strait and Strait of Georgia
<b>Northern Canada</b>	
<b>ARC 404</b>	Great Slave Lake and Mackenzie River

Each volume includes a section entitled “Record of Changes” which lists all updates that are incorporated during the current calendar year.



## Section 5: List of Lights, Buoys and Fog Signals Corrections

The amendments are **highlighted** and deletions are **crossed out**. For general and region-specific information on the List of Lights, click on the following links: [Newfoundland and Labrador Coast](#), [Atlantic Coast](#), [Inland Waters](#) and [Pacific Coast](#).

No.	Name	Position ----- Latitude N. Longitude W.	Light Characteristics	Focal Height in m. above water	Nomi- nal Range	Description ----- Height in meters above ground	Remarks ----- Fog Signals
-----	------	--	--------------------------	--	-----------------------	--	---------------------------------

### ATLANTIC COAST

#### BAY OF FUNDY, N.B. – WEST (LL 5.8 – 114)

93 H4100	Chance Harbour	On Reef Point, W. side of harbour entrance. 45 07 06.8 066 20 51.5	LFI	W	6s	12.4	8	Cylindrical tower, red and white horizontal bands. 7.4	Flash 2 s; eclipse 4 s. <b>Operates at night only.</b> Year round.	Chart:4116 Edn 05/25 (F25-007)
-------------	----------------	--	-----	---	----	------	---	--	--	-----------------------------------

#### NORTHUMBERLAND STRAIT – WEST (LL 1085 – 1165.9)

1125.21	Buctouche Harbour light buoy XV19	46 28 05.3 064 39 23.0	FI	G	4s	.....	.....	Green, marked "XV19".	Buoy may be repositioned due to shifting channel. Seasonal.	Chart:N/A Edn 05/25 (G25-034)
---------	---	---------------------------	----	---	----	-------	-------	-----------------------	---	----------------------------------

#### GASPÉ – CHALEUR BAY (LL 1169.1 – 1426)

1307	Caraquet Channel light buoy EM7	47 50 16.7 064 47 37.1	Q	G	1s	.....	.....	Green spar, marked "EM7".	(Winter spar.) Buoy may be repositioned due to shifting channel. Seasonal (in place year round).	Chart:4913 Edn 05/25 (G25-028)
1308.5	Caraquet Channel light buoy EM10	47 49 34.9 064 48 54.4	FI	R	4s	.....	.....	Red spar, marked "EM10".	(Winter spar.) Buoy may be repositioned due to shifting channel. Seasonal (in place year round).	Chart:4913 Edn 05/25 (G25-029)
1311.5	Caraquet Harbour light buoy EM17	47 48 48.8 064 51 03.6	FI	G	4s	.....	.....	Green spar, marked "EM17".	(Winter spar.) Seasonal (in place year round).	Chart:4913 Edn 05/25 (G25-030)
1315	Caraquet Harbour light buoy EM25	47 48 20.5 064 54 04.6	FI	G	4s	.....	.....	Green spar, marked "EM25".	Seasonal (in place year round).	Chart:4913 Edn 05/25 (G25-031)
1318	<b>Île de</b> Caraquet Harbour light buoy EM28	SW. of <b>island</b> . 47 48 19.9 064 54 17.5	FI	R	4s	.....	.....	Red spar, marked "EM28".	(Winter spar.) Buoy may be repositioned due to shifting channel. Seasonal (in place year round).	Chart:4913 Edn 05/25 (G25-032)
1321.6	Île de Caraquet light buoy EN10	Caraquet Harbour. 47 48 34.6 064 54 09.3	Q	R	1s	.....	.....	Red spar, marked "EN10".	Seasonal.	Chart:4913 Edn 05/25 (G25-033)

Notices to Mariners – Monthly Eastern Edition  
Section 5: List of Lights, Buoys and Fog Signals Corrections

No.	Name	Position ----- Latitude N. Longitude W.	Light Characteristics	Focal Height in m. above water	Nomi- nal Range	Description ----- Height in meters above ground	Remarks ----- Fog Signals
-----	------	--	--------------------------	--	-----------------------	--	---------------------------------

INLAND WATERS

**ST. LAWRENCE SEAWAY, CANAL DE BEAUHARNOIS TO KINGSTON (LL 33 – 401)**

398	Ferguson Point light spar buoy KA1	NW. of point. 44 12 30.9 076 27 18.9	Fl G 4s	.....	.....	Green spar, marked "KA1".	Seasonal (in place year round).  Chart:2017 Edn 05/25 (B25-016)
399	Wolfe Island light buoy KA5	44 11 54.2 076 26 31.4	Fl G 4s	.....	.....	Green spar, marked "KA5".	(Winter spar). Seasonal.  Chart:2017 Edn 05/25 (B25-017)
399.1	Goose Island light buoy KA6	44 11 50.9 076 26 34.6	Q R 1s	.....	.....	Red spar, marked "KA6".	Seasonal.  Chart:2017 Edn 05/25 (B25-020)

**LAKE ONTARIO (LL 403.4 – 551)**

501.4	Oshawa Harbour light buoy MV5	43 51 47.6 078 49 17.5	Fl G 4s	.....	.....	Green spar, marked "MV5".	Seasonal (in place year round).  Chart:2050 Edn 05/25 (B25-021)
501.6	Oshawa Harbour light buoy MV6	43 51 49.9 078 49 12.5	Fl R 4s	.....	.....	Red spar, marked "MV6".	Seasonal (in place year round). Position in NAD83.  Chart:2050 Edn 05/25 (B25-015)

**LAKE ERIE (LL 552 – 623)**

620.1	Colchester Reference Point E (V-AIS)						Delete from list.  Chart:2123 Edn 05/25 (B25-012)
620.3	Colchester Reference Point S (V-AIS)						Delete from list.  Chart:2123 Edn 05/25 (B25-013)
620.5	Colchester Reference Point W (V-AIS)						Delete from list.  Chart:2123 Edn 05/25 (B25-014)

**LAC SAINT-LOUIS – SECONDARY CHANNELS (LL 1193 – 1226.95)**

1196.3	Lachine light buoy AC24	45 25 44.6 073 42 25.0	Fl R 4s	.....	.....	Red spar, marked "AC24".	Seasonal (in place year round).  Chart:1430 Edn 05/25 (Q25-045)
1197.2	Lachine light buoy AC32	45 25 29.4 073 43 16.3	Fl R 4s	.....	.....	Red spar, marked "AC32".	Seasonal (in place year round).  Chart:1430 Edn 05/25 (Q25-046)
1197.5	Lachine light buoy AC37	45 25 20.7 073 43 35.9	Fl G 4s	.....	.....	Green spar, marked "AC37".	Seasonal (in place year round).  Chart:1430 Edn 05/25 (Q25-047)

Notices to Mariners – Monthly Eastern Edition  
Section 5: List of Lights, Buoys and Fog Signals Corrections

No.	Name	Position ----- Latitude N. Longitude W.	Light Characteristics	Focal Height in m. above water	Nomi- nal Range	Description ----- Height in meters above ground	Remarks ----- Fog Signals
HUDSON STRAIT AND BAY (LL 2545 – 2621)							
2566 H0053.4	Cape Poillon range	Frobisher Bay. 63 08 02.9 067 51 48.4	Iso W 2s	84.0	14	Square tower, orange daymark with black vertical stripe.	Visible in line of range. Operates 24 h. Seasonal (in place year round).
2567 H0053.41		149°30' 3425.6 m from front.	Iso W 2s	203.5	14	Square tower, orange daymark with black vertical stripe.	Visible in line of range. Operates 24 h. Seasonal (in place year round). Position in NAD83.
Chart:7125 Edn 05/25 (A25-044)							
2570 H0054.2	Pike Island range No. 1	Frobisher Bay, Pike- Resor Channel. 63 13 54.4 067 59 27.8	Iso W 2s	28.0	.....	Square tower, orange daymark with black vertical stripe.	Visible in line of range. Operates 24 h. Seasonal (in place year round).
2571 H0054.21		Same tower as Pike Island rear range No. 2. 329°23' 386.6 m from front.	Iso W 2s	44.4	8	Square tower, orange daymark with black vertical stripe.	Visible in line of range. Operates 24 h. Seasonal (in place year round). Position in NAD83.
Chart:7125 Edn 05/25 (A25-045)							
2572 H0054.3	Pike Island No. 2 range	63 15 11.2 068 01 20.3	Iso W 2s	20.9	14	Square tower, orange daymark with black vertical stripe.	Visible in line of range. Operates 24 h. Seasonal (in place year round).
2573 H0054.31		Same tower as Pike Island rear range No. 1. 146°05' 2461.5 m from front.	Iso W 2s	52.0	14	Square tower, orange daymark with black vertical stripe.	Visible in line of range. Operates 24 h. Seasonal (in place year round). Position in NAD83.
Chart:7125 Edn 05/25 (A25-046)							
2585 H0056.2	Koojesse Inlet range	Centre of the city. 63 44 43.9 068 31 24.3	F G .....	13.1	17	Square skeleton tower, red daymark with black vertical band. 13.2	Visible in line of range. Operates 24 h. Seasonal (in place year round).
2586 H0056.21		344°13' 419 m from front.	F G .....	30.3	17	Square skeleton tower, orange daymark with black vertical band. 16.4	Visible in line of range. Operates 24 h. Seasonal (in place year round).
Chart:7127 Edn 05/25 (A25-047)							